

NEW FREEDOM
FOR YOUR
PLANNING



ELITECAD ARCHITECTURE 16

Innovations of the new version

www.elitecad.eu

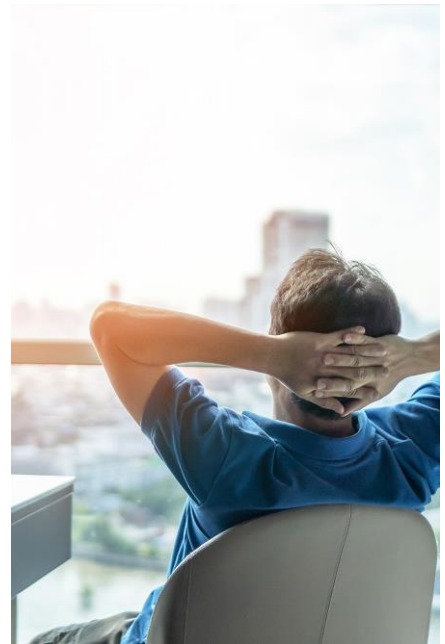
Innovations of the new version

December 2022

Created for you: ELITECAD Architecture 16 supports you perfectly, no matter what or how you plan. Because we are aware that there are always people behind abstract terms such as planners or users. Unique personalities with individual preferences, talents, strengths and weaknesses. **The new freedom** of planning accompanies everyone in this individuality.

ELITECAD has always stood for optimal support in everyday planning, but with the new version 16 you now have an incomparable companion for your projects. The human as the centre of planning has top priority in ELITECAD Architecture 16. Processes, workflows and standards have become more efficient and intuitive with full focus on the planning person. So, expect more support for your daily challenges. Experience absolute planning freedom without sacrificing efficiency thanks to state-of-the-art technology. **'Feel free to expect more'** is now the credo that ELITECAD gives you on your way.

While ELITECAD Architecture 15 put a strong focus on BIM and collaboration, the new version 16 provides you with a broad package of innovations from all areas. A completely revised user interface enables your perfect start to the planning pleasure - **the most beautiful and user-friendly ELITECAD of all time!** But the new version also puts you in the fast lane in terms of functionality: plan faster and easier than ever with numerous new automations such as floors with gradients via point input, automatic suspended ceilings, new parametric door objects, automatic elevation views and additional quantities and reports. Concentrate completely on your design, we take care of everything else - up to the native PDF export, which documents your project in record time in a lean and detailed way. Your project will also become a special feast for the eyes through the merging of architectural design and first-class visualisation. With the brand-new material manager, including more than 700 selected materials, you will impress with the highest visualisation quality at every planning step without any additional effort.



It sounds like a lot of new features? That's because it is. But thanks to the new interactive Help Centre, you always have a good overview of the multitude of possibilities in ELITECAD Architecture 16. In this sense: expect more - get more! The ELITECAD team hopes you enjoy both trying out and using the new version in your daily work.

A handwritten signature in black ink, reading "Dr. Wolfgang Stöger". The signature is fluid and cursive.

Dr. Wolfgang Stöger
CEO

Table of contents

Innovations of the new version.....	2
User interface	9
Expect more - Aesthetics & functionality	9
Completely redesigned user interface	9
Your software the way you want it - 7 modern interface styles	10
Dark-Mode with optimised icons	10
New function assistant in title bar	10
Interactive input line with menu guidance and tooltips	11
Unification of the dialogs for dimensions, text, arrow and hatching	11
Unification of terms	11
Architecture innovations.....	12
Expect more – Freedom of design	12
General architecture innovations.....	12
Completely revised predefined standard parameters	12
Automatic object dimensioning	13
Adopt parameters including attribute labels	13
Axis grid.....	13
Axis grid with variable distances	13
Slab / floor.....	13
Automatic gradient calculation via point	13
Roof	14
New record „Height limit“	14
Window	14
New predefined window handles.....	14
Refresh of the standard parameters.....	14
Terrain	14
Designated names for modifications	14
Detailed output of the cubature.....	15
Simplified selection of points	15
Reference terrain with modifications	15
Chimney and columns	16
Automatic exclusion of walls	16

Room	16
Intelligent suspended ceilings	16
Room names with two lines	16
Stairs and railings	17
Dialogs unified with other objects	17
Asymmetric railing overhang with kink	17
Stairs – stringer made from profile	17
New predefined steel staircase	17
Door	17
Completely new door generator	17
Editor for configuration of door leaves	18
Division editor for side panels and transom lights	18
Grouping of 2D, 3D and hatch parameters	18
9 new predefined doors	19
Wall	19
Optimised and extended presets	19
New parameter set „Slab edge formwork“	19
Library parts management	19
Numerous new library parts	19
Improvement of existing library parts	19
2D extensions	20
Expect more – Planning efficiency	20
Regular polygons	20
Hatches	20
Simplified offset detection for model hatches	20
New hatches according to DIN standards	20
Line types	21
Texts	21
Arrows	21
Layout and documentation	22
Expect more – documentation aids	22
Attributes and BIM	22
New predefined attributes	22
New predefined attribute labels (e.g. numbering)	22
Rules and value ranges for attribute colours	23

Attribute colours – transparency configurable.....	23
Colours for fire rating adapted to DIN standards	23
Save attributes from drawings into database	24
Edit or delete the definition of free attributes.....	24
Views	24
New depiction type ‘Solid with Shader’ for highest quality	24
Resolution of solid views now individually configurable	24
Colour properties for each scene	25
Room hatches separately configurable for each view	25
Draft view of multi-layered objects in floor plans and sections.....	25
Sections	25
Parametric labelling of rooms in sections.....	25
New section type ‘restricted stepped section’	25
Automatic elevation views	26
Height markers.....	27
Depiction depending on representation level.....	27
Height marker with parametric settings for parameter groups	27
Title blocks.....	27
Improved versioning with flexible number of revisions	27
Quantities & Reports	28
Expect more – clarity.....	28
Management of project-related master data.....	28
Calculation of full storeys.....	29
Automatic calculation of FAR and BCR based on plans	30
New filtering options for storeys and buildings.....	30
Report for reveal areas for doors and windows.....	31
New materials for data exchange with tendering applications.....	31
Visualisation	32
Expect more – impressions and customer enthusiasm.....	32
Visualisation materials	32
Completely redesigned library content.....	32
More than 700 new materials with high quality textures	33
Easy access to thousands of online materials	33
New revised material management.....	33
Globally unique material keys (GUIDs)	33

Intelligent search bar with multitext support.....	34
New favourites function including icons and filtering	34
Predefined material presets for automatic configuration of reflections, shininess, etc.....	34
Batch import of materials and folders using drag & drop (incl. presets)	34
Display number of materials	34
Display material origin.....	34
Improved preview	35
Highlight used materials with a click.....	35
Performance of database access improved.....	35
New materials for all standard parameters.....	36
Image export.....	37
Create and export snapshots with transparent background.....	37
Video export.....	37
Optimisation and simplification of the video export dialog	37
Easy native MP4 video export.....	37
Native generation of stereoscopic 3D videos	38
Connectivity & interfaces	39
Expect more – Collaboration, communication and teamwork	39
3D-PDF	39
Export of views with attribute colours	39
3D Printing.....	39
STL export.....	40
Size preview.....	40
Storeys or buildings	40
Transparency	40
BKI Cost planner.....	40
Export of building data to BKI cost planner	40
DXF/DWG.....	41
Import and export dialogs revised.....	41
New batch export for DXF/DWG similar to PDF	41
DXF Export of views with attribute colours	41
Support of AutoCAD 2022 files.....	41
IFC	42
Improved exchange of IFC library parts.....	42
Improved positioning / load into functions	42
PDF.....	42

New native PDF export	42
Crisp high-quality plans in every zoom level due to export as vector data.....	42
Drastically reduced file size and faster export and management	42
Transparent vectorised colour gradients	43
Export including layer structure.....	43
Point clouds	43
Simplified splitting and cleaning of point clouds	43
Synchronisation with external rendering applications.....	44
Incremental model updates with a single click	44
SketchUp 2022 support	44
Usability	45
Expect more – joy, simplicity and efficiency	45
Drastically improved graphic output	45
Shader mode active by default.....	45
Optimised standard light settings.....	45
Revised project templates.....	45
Revised sample projects	45
New additional layer definitions.....	45
Copy parameters.....	45
Copy parameter function retains the previous selection per object	45
Walk mode now available as toggle switch in input bar	46
ELITECAD Help Centre.....	47
Expect more - insights.....	47
New website for interactive help for ELITECAD products.....	47
Intelligent and fast search	48
Continuous expansion of content.....	48
Native integration in ELITECAD	48
System and configuration.....	49
Expect more – Optimisation, support and internationalisation	49
Revised and optimised default settings.....	49
Windows 11 Support.....	49
Internationalisation and localisation.....	49
Slovenian version.....	49
Greek version.....	49

Russian version49

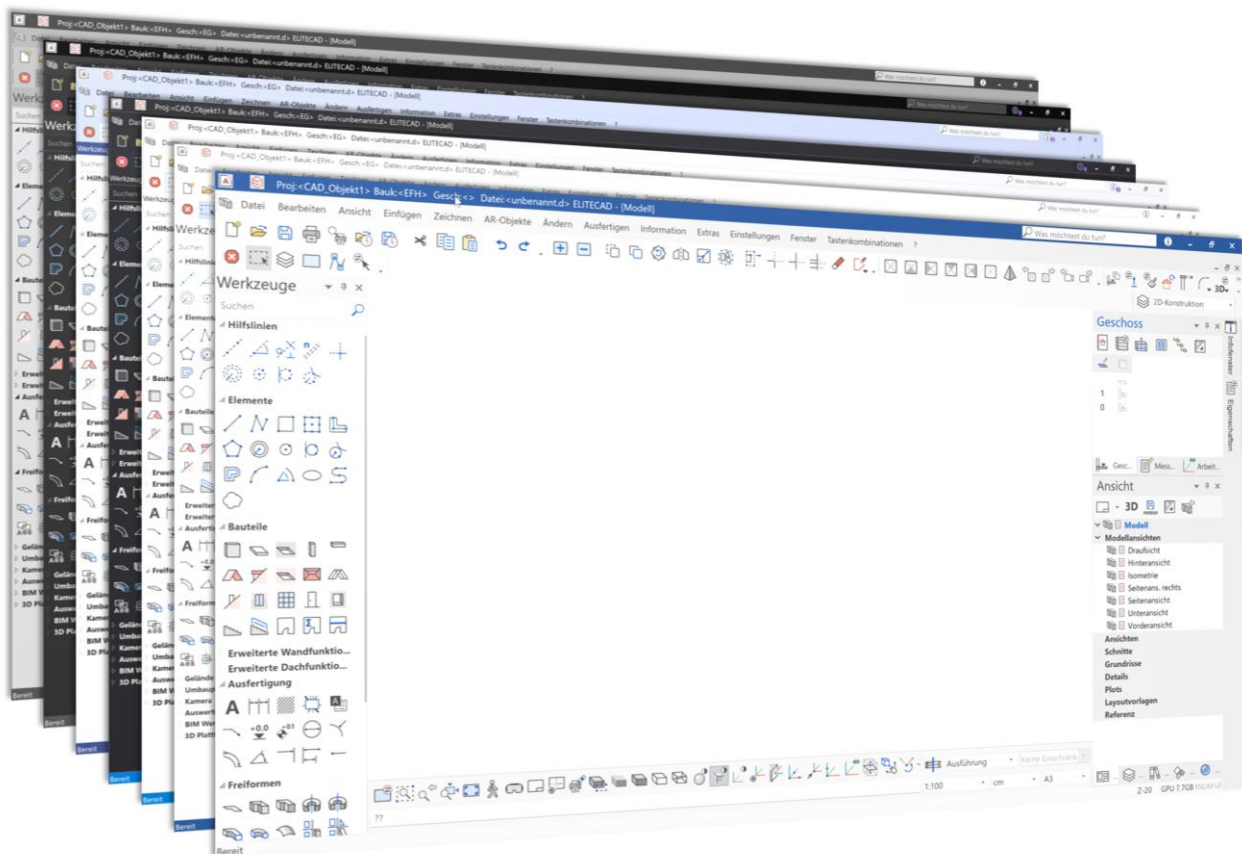
User interface

Expect more - Aesthetics & functionality

The science of beauty combined with the highest object functionality and standard-compliant implementation always accompanies planners in their everyday work. The interplay of aesthetics and functionality is also a central theme in software development, to which particular attention has been paid in the new version.



ELITECAD Architecture 16 impresses with the most modern and clear design. In addition, the new user interface is highly adaptable to individual preferences and the end devices used. Choose freely between Dark Mode or one of the 7 new interface styles, enjoy the optimally scalable user interface of your planning tools and benefit from even more intuitive workflows thanks to the complete revision of the control elements. The new version convinces at first sight and leaves nothing to be desired.



Completely redesigned user interface

Our ambition: Many users spend a large part of their working day in front of ELITECAD. Our ultimate goal is to offer the best user experience in the CAD industry. We achieve this goal by constantly developing the software based on feedback from our users.

All icons in ELITECAD Architecture 16 are scalable, pin-sharp and adapt to modern resolutions. Whether on a full HD monitor, 4K or even 8K screen, the new user interface with its reduced, clear

lines looks beautiful and elegant on every display. Shine in front of your friends and colleagues: The modern look and feel of our software leaves nothing to be desired.

Security instead of uncertainty: Faster and more efficient planning thanks to a standardised interface and consistent icon sizes. The high level of recognition of the symbols ensures that functions can be found quickly. We make it as easy as possible for you to get started and create more space for your ideas.



Not only function icons, but all graphics in all setting menus and dialog windows have been redesigned from scratch. Vector instead of pixel graphics enable a razor-sharp display of all control elements in dialogs. The reduced colours and their consistent use create a pleasant, uniform appearance. Users with limited red-green perception will particularly appreciate the improved colour scheme.

Don't worry about upgrading to the new version. The icons are instantly recognisable and in the same position as before. So you can get started right away and notice how much the new user interface supports you in your daily work. With ELITECAD 16 it's even more fun.

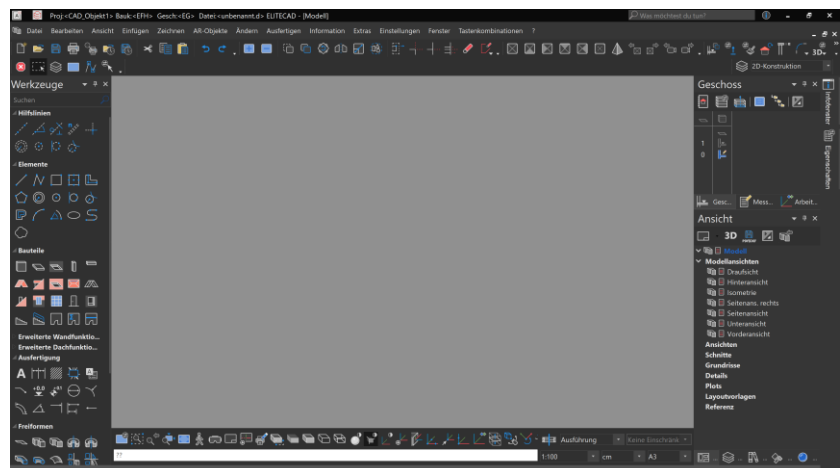


Your software the way you want it - 7 modern interface styles

Individual work is an integral part of today's workday. Seven new interface styles allow you to design your ELITECAD the way you want it. In addition, the new version also contains configurable Office and Windows interface styles.

Dark-Mode with optimised icons

Switch easily and conveniently from light to dark mode. True to the motto - **Join the dark side!** In the new ELITECAD version, all icons have been optimised for the new dark mode in order to create a consistent overall experience. A dark background and high-contrast colours protect your eyes when working late at night.



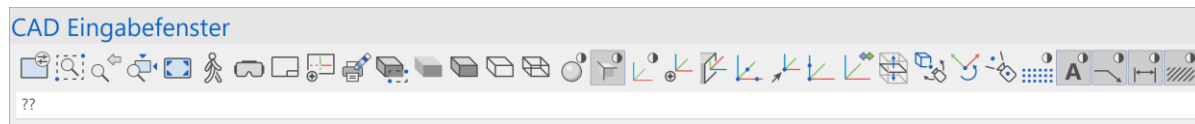
New function assistant in title bar

What would you like to do? Find every function quickly and execute it immediately: Then the interactive function search directly in the title bar with automatic execution is just right for you! Countless functions are easily accessible via assistants and just a click away. Searching in menus or in the toolbars is no longer necessary, the assistant is particularly useful for functions that are not often used.

Entering just a few letters brings you all the appropriate options to choose from. Each function is immediately accessible, even if the exact name is not known. ELITECAD thus supports professionals and beginners alike.

Interactive input line with menu guidance and tooltips

Every click is a hit: Larger and easier-to-select icons above the input line make operation easier and thus ensure even smoother and more efficient planning.



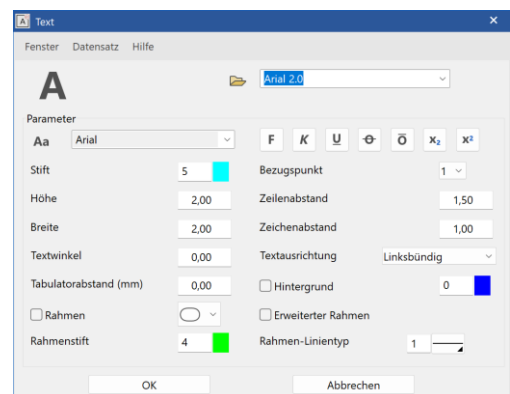
Schreib es einfach
Einfach zu schreiben beginnen, um Funktionen auf Knopfdruck verfügbar zu machen und Hilfe zu erhalten

Always keep an overview: error avoidance through an input line with an interactive information display of the respective function. The input line and the information line above it have been combined. This simplifies operation and also saves some space, which in turn can be used in the graphics window.

If something is written in the input line, the hint or query text appears as a tool tip, no information is lost with this intelligent solution.

Unification of the dialogs for dimensions, text, arrow and hatching

Consistency in dialogs is not limited to the architecture functionality. Usability is particularly important for the basic functionality, so we have unified the finishing dialogs and adjusted their appearance to that of the architecture dialogs. The redesign and the standardisation of the user interface also creates recognition value and more understandable processes in the basic dialogs.



Unification of terms

Even if it was clear in most cases, there were isolated cases where similar terms were used for one and the same thing. With a critical eye and after a strict examination, we have standardised some terms in order to be able to offer even more standardisation and comprehensibility.

So the "plan views" were renamed to "floor plans". "Reference drawing" is called "reference plan" in the new architecture 16 version. The "Skybox/Skymap" is now referred to simply as "Panorama Environment". Analogous to the MS Office products, the dialogs now use "Accept" instead of "Set".

Architecture innovations

Expect more – Freedom of design

Individual design has become an indispensable part of modern architectural work. In order to offer you even more design freedom, we have introduced features such as the axis grid with variable distances. Numerous automations, such as floors/slabs with automatic gradient via point input, relieve you of complex construction tasks and thus create more time for the essentials.



Of course, with ELITECAD, functional extensions always go hand in hand with simple operation. Our aim is to achieve results with as few

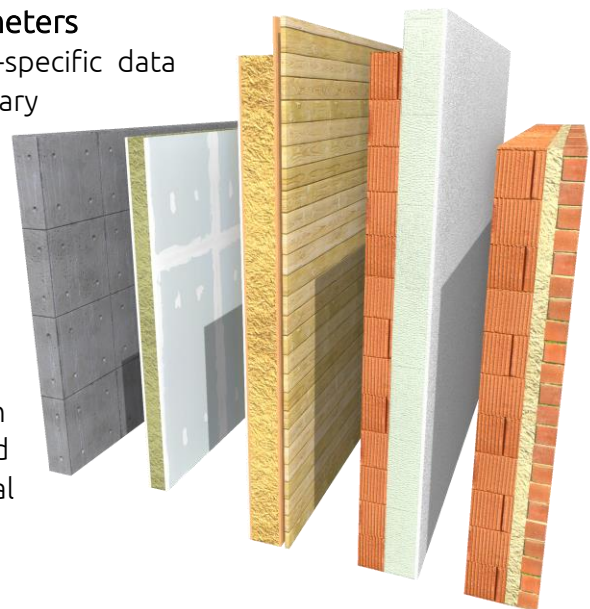
and simple steps as possible. We make it difficult for ourselves to make it easy for you. Numerous optimisations, also for existing functions, make work easier in many areas. For example, architecture objects have been standardised to ensure a better overview.

Thanks to the extensive feedback from our users, the default settings of all predefined datasets have been expanded and adapted even better to practice. This saves time in the configuration so you can focus on your planning activities.

General architecture innovations

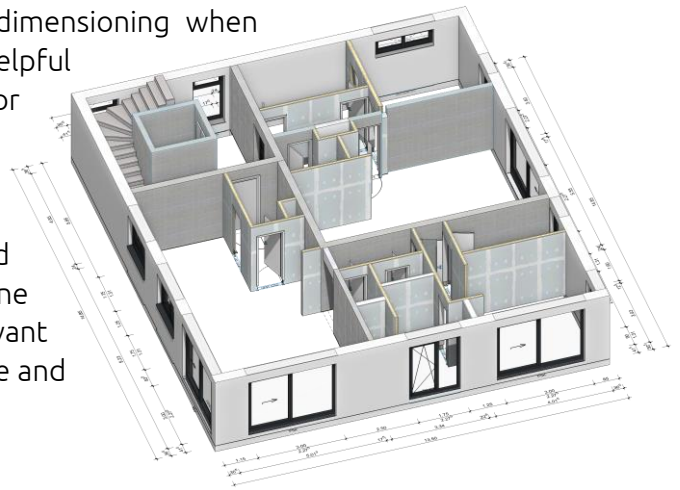
Completely revised predefined standard parameters

ELITECAD provides extensive predefined, region-specific data sets for each architectural object and for each auxiliary element. We have made adjustments, optimisations and visual upgrades to almost all parameter sets in order to be able to offer you even better software performance and easier use. All data sets have been updated and equipped with new visualisation materials. New data sets with values that are frequently used in practice have been added. Data sets that have been created in different regions over the years have been aligned with each other so that we can provide optimal settings for all regions with the same quality.



Automatic object dimensioning

Many of our users appreciate the automatic dimensioning when creating buildings from a polygon. Exactly this helpful automation is now also available in version 16 for all objects. On the one hand, the wizard enables the subsequent automatic building structure dimensioning with the same options as when creating buildings. On the other hand, the wizard can also be used for fast object dimensioning. One click on a 2D polygon or component and all relevant dimensions are created automatically. Ease of use and time savings, as you are used to from ELITECAD.



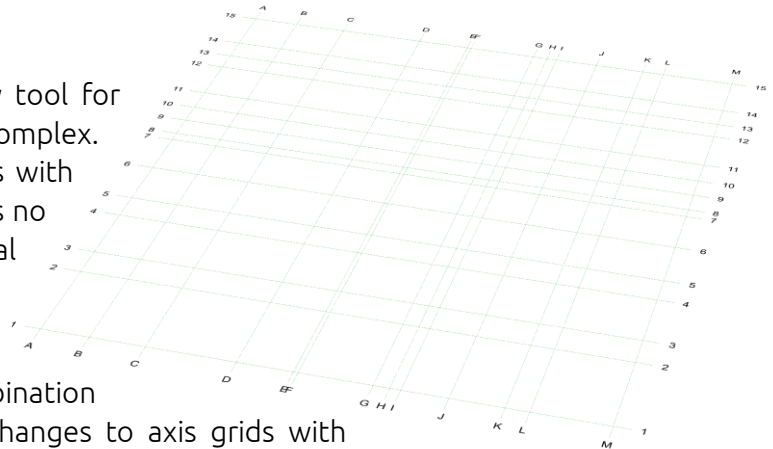
Adopt parameters including attribute labels

Documentation is now possible right during the draft phase: With just two clicks you get a fully labelled object. The automatic object labelling using parametric attribute labels can be created directly when applying the parameters. Work in real time: Automated when creating objects instead of manual follow-up. The highlight here: The position of the attribute label can be freely selected, the ideal combination of simplification and retention of individual design freedom.

Axis grid

Axis grid with variable distances

ELITECAD now provides the necessary tool for every building shape, no matter how complex. The new axis grid dialog enables plots with variable distances in a single object. It is no longer necessary to divide into several axis grids with different distances.



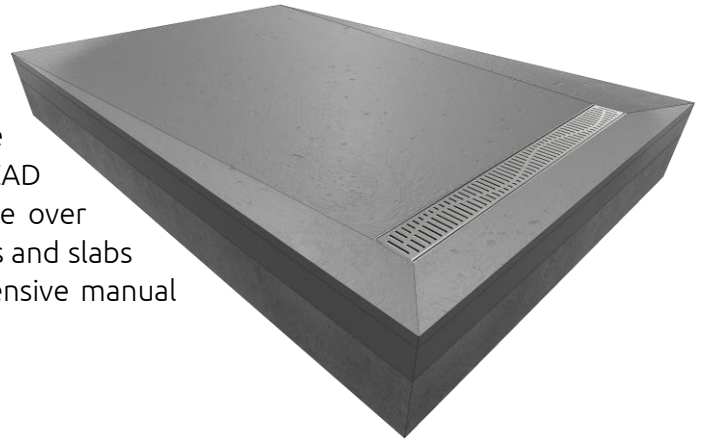
Entering the distances offers all degrees of freedom and any combination options in any number. Subsequent changes to axis grids with variable distances can now be made directly via the list in the grid dialog. Predefined axis grid types and labels facilitate easy use so even the most difficult task becomes child's play with the variable axis grid in ELITECAD.

Slab / floor

Automatic gradient calculation via point

With the automatic calculation of the gradient via point, the planning of slabs and floors is almost effortless. Time-consuming manual construction of individual planes is no longer necessary. Regardless of whether drainage floors, showers, drains, terraces or flat roofs - slabs or floors are created quickly and easily via a point or an existing opening. Only the height for the point or for the opening has to be entered, ELITECAD does the rest automatically. The floor contour is divided and individual surfaces are created with a gradient to the lowest point or to the opening contour.

Not only is creating it easier than ever, changing the parametric floors is just as easy. A change in the height value or the contour and all partial areas with a slope are automatically adjusted. To make things even easier right from the start, ELITECAD includes a predefined set of parameters for "slope over drain". This allows you to automatically create floors and slabs with slope over point in record time, without extensive manual intermediate steps.



Roof

New record „Height limit“

Walls are delimited by roofs. But there are situations where you want to limit a wall, but there is no roof. There is a suitable solution for this application: The roof with the "Height limit" property, which is already predefined as a parameter set. It delimits walls but is not depicted in 3D.

Window

New predefined window handles

With ELITECAD Architecture 16, windows can be displayed even more realistically. The new dialog offers even more available settings. Frame widths for casements can be specified individually. Window openings can be freely designed accordingly. The new window dialog offers a simplified generation of standard subdivisions for windows and also non-continuous muntins.



Refresh of the standard parameters

Standard parameters such as the sliding door have been expanded to include window handles in order to present a contemporary appearance.

The sectional door is now also available as a parametric door. For further information, see also chapter door!

Terrain

Designated names for modifications

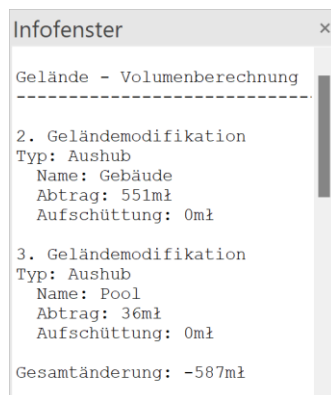
Terrain modifications are excavation, additions, road, trail, and free cut. A name can be optionally specified in all dialog windows. The use of the name is described in the subsequent improvement.

Detailed output of the cubature

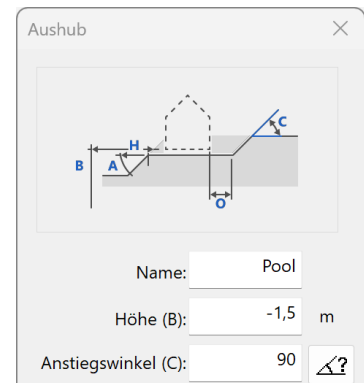


In practice, a typical terrain around a structure has numerous modifications, i.e. excavation, additions, roads and paths. Every single change in the original terrain causes material to be removed or added, or both at different points at the same time. A value for the cubature is displayed in the property bar of the terrain, namely the difference between the initial state and the final state. Ideally, this is zero in order to save on transport costs. However, zero does not mean that no material was moved, only the entire change is displayed.

With ELITECAD 16, changes to the individual modifications can now



be listed in detail. The information window shows the amount of soil removed and applied for each modification. So that the individual work steps can be distinguished, the log also contains the new names of the respective modifications. Adding everything together provides a sum of the total additions and total removal, which are also output separately and the difference between them is displayed in the property bar as before.



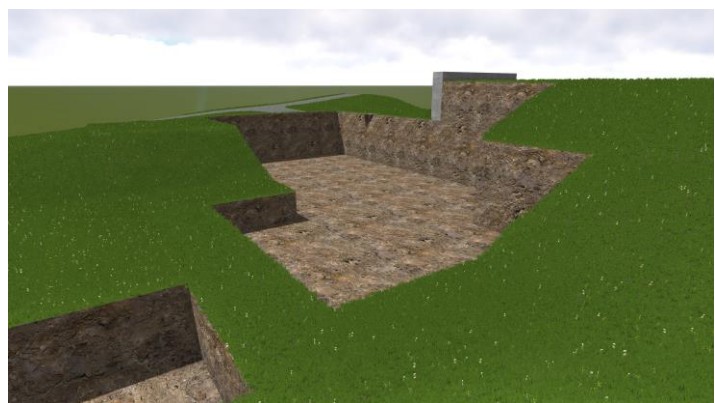
All in all, the calculation log provides better traceability and control of the individual modifications without additional effort.

Simplified selection of points

Selecting height points via a polygon has been possible in ELITECAD for a long time. Very often this function is used to reduce the imported height points, usually you want to limit the terrain to an area. Until now, however, all points inside the selection polygon have been selected, while the points outside should actually be deleted. With the new option "Select inside" or "Select outside" all points outside the specified area can be selected in one go. This procedure is much more intuitive and saves a lot of manual intermediate steps.

Reference terrain with modifications

For the calculation of the excavation differences, it is necessary to define an initial state. The mass changes are calculated relative to this. The original terrain results from elevation points, curves and terrain areas and the added modifications result in the difference. However, sometimes it is necessary to create the initial state with modifications, e.g. if an excavation for a building already exists and an area next to it needs to be expanded. For these use cases, you can now choose whether the reference terrain should be frozen with or without modifications.



Chimney and columns

Automatic exclusion of walls

Wall cut-outs for a chimney are automatically deducted from the area of the wall. The setting is active by default, so you only have to place the chimney against the wall. ELITECAD automatically calculates the recess.

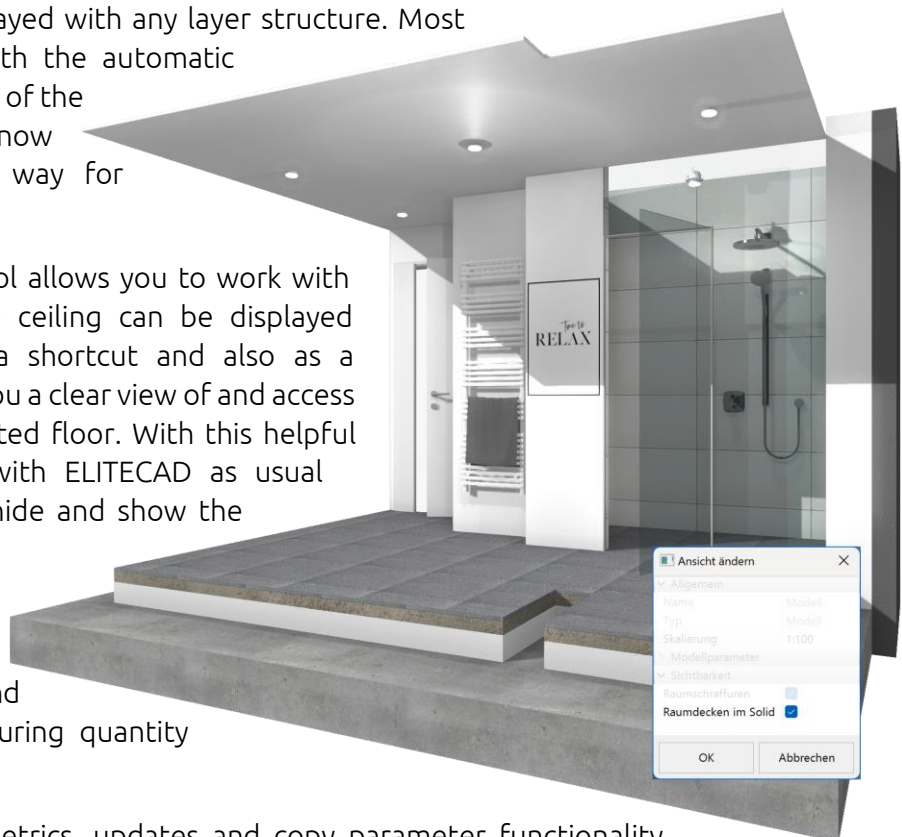
Room

Intelligent suspended ceilings

A completely finished room with just one click, including ceiling in 3D - does that sound too good? ELITECAD Architecture 16 now offers exactly this possibility. The parametrically suspended ceiling in the 3D model can be displayed with any layer structure. Most users are already familiar with the automatic function from the floor as part of the room parameters and can now also be used in the same way for ceilings.

The intelligent visibility control allows you to work with storeys in the 3D view. The ceiling can be displayed transparently quickly using a shortcut and also as a separate view option, giving you a clear view of and access to the objects on the associated floor. With this helpful mechanism, you can work with ELITECAD as usual without having to manually hide and show the ceiling again and again.

The ceiling can be combined with openings, ceiling coverings and free ceilings and is also taken into account during quantity calculation.



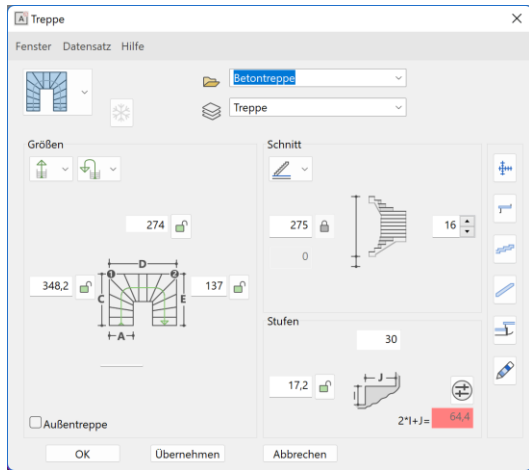
Automatic generation, parametrics, updates and copy parameter functionality make the suspended ceiling a flexible, high-quality architectural object.

Room names with two lines

Are you a planner of many words and deeds? Then this feature is something for you! Keep the overview at all times, now with 2-line room names! Your creativity knows no limits!

Stairs and railings

Dialogs unified with other objects



The stair and railing dialogs have been aligned with the other architectural objects. Here too, the standardisation leads to better recognition and to faster and more efficient work.

Asymmetric railing overhang with kink

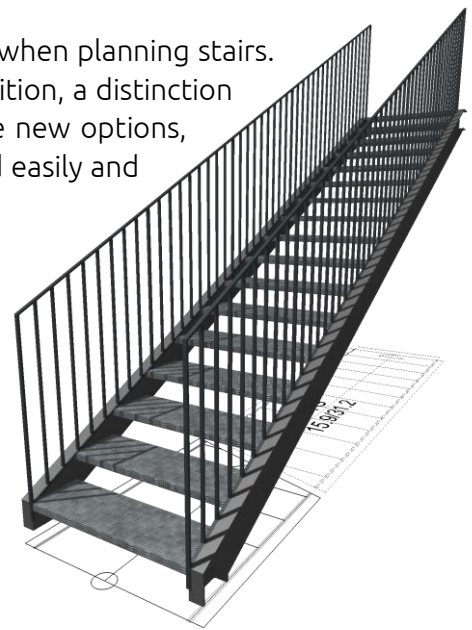
ELITECAD Architecture 16 offers the possibility to create parametric railing constructions according to well-known standards. Asymmetrical railings, where the handrail overhang has a kink, can be created with just one value input. The kink in the handrail of the railing can be assigned using a button. The beginning and end of a handrail are set independently of each other.

Stairs – stringer made from profile

The stringers made of free profiles offer even more flexibility when planning stairs. Choose between the string types "even" and "variable". In addition, a distinction is made between double-sided and one-sided cheek. With the new options, modern and contemporary stairs with handrails can be created easily and quickly.

New predefined steel staircase

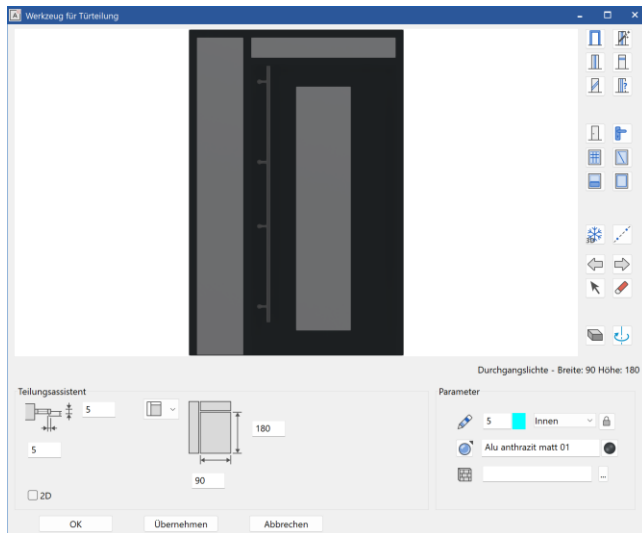
Create the desired result in just a few steps with predefined types. In addition to concrete stairs and stringer stairs, steel stairs can now also be easily created and integrated parametrically. We have extended the stair types so that they can be used without spending time for configuration or as a template for modifying according to your own wishes.



Door

Completely new door generator

The new door assistant offers unlimited configuration options, numerous new predefined modern doors, a wide range of possible variations as well as new door handles.



Are you dreaming of your favourite front door? Whatever it is, now you have the right tool for it. With the new door assistant, you can plan your dream door with just a few clicks, including free cut-outs, transom lights, side panels, modern door handles, a wide variety of materials and much more.

The new door objects are fully-fledged and fully-integrated architectural objects with all known functions such as copy parameters, have comprehensive



attributes, are exported with all properties during the IFC export and are of course also taken into account in the quantity evaluation. All degrees of freedom that are known from the window editor are now also available for the door and more options have been added.

Editor for configuration of door leaves

From now on, ELITECAD offers the possibility to plan doors according to contemporary standards. You have complete design freedom for door leaves with cutouts. Any shape can be represented by means of free contours, there are no limits to creativity.

Division editor for side panels and transom lights

The division editor for side parts and transom lights enables the creation of entrance doors or sectional doors with freely selectable divisions. Muntins can now also be displayed inconsistently. If you want it even easier, you can use the new division assistant and choose from a large number of predefined division variants.

Grouping of 2D, 3D and hatch parameters

In the new version, the 2D and 3D hatching parameters are combined to display all materials at a glance. No further dialogs are necessary to change the appearance. As with windows, the appearance of the door and the layout can be conveniently changed at a central location.

9 new predefined doors



Don't want to create every type of door yourself? ELITECAD supports you here too. The new templates for the doors can be used immediately. New entrance doors, interior doors, laboratory doors, sectional doors, garage doors are available as complete predefined data sets.

Wall

Optimised and extended presets

With revised parameters and default values, planning walls is even easier than before. In ELITECAD Architecture 16 we have optimised and extended the presets for walls. Thanks to the new visualisation materials, walls already look perfect in the draft without any additional effort.

New parameter set „Slab edge formwork“

New in ELITECAD Architecture 16 we have prepared a separate parameter set for slab edge formwork for you.



Library parts management

Numerous new library parts

Vehicles, furniture, lighting, etc. are indispensable components of high-quality planning. A large number of new 3D library parts in all categories will support you. All objects are labelled as usual, assigned to a suitable layer and are aligned to the floor depending on their type.

Improvement of existing library parts

Existing 3D parts have been upgraded with new visualisation materials with reflections, gloss, surface structure and much more. This results in an even higher quality overall. New predefined position and exchange points enable easier handling.



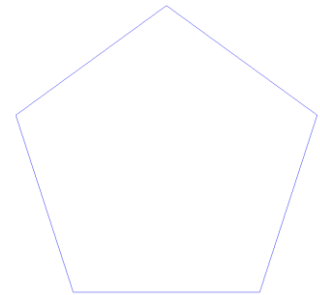
2D extensions

Expect more – Planning efficiency

Working with 2D plans also remains a central component in a 3D-oriented BIM software. Many complex components are created from 2D contours and of course plans have to be created quickly, easily and in good quality. For these reasons, we put a special focus on the continuous simplification of 2D functionality. Simpler processes and new functions lead to faster results, making daily work steps easier.

Regular polygons

The regular polygon sounds simple, but is difficult to construct for some types. With the new 2D function, the task is reduced to just a few clicks. The number of corners determines the type, but the many input possibilities will surprise you. Incircle radius, edge length etc. determine the size depending on the requirement. The position indication via different points and angles support you in all situations.

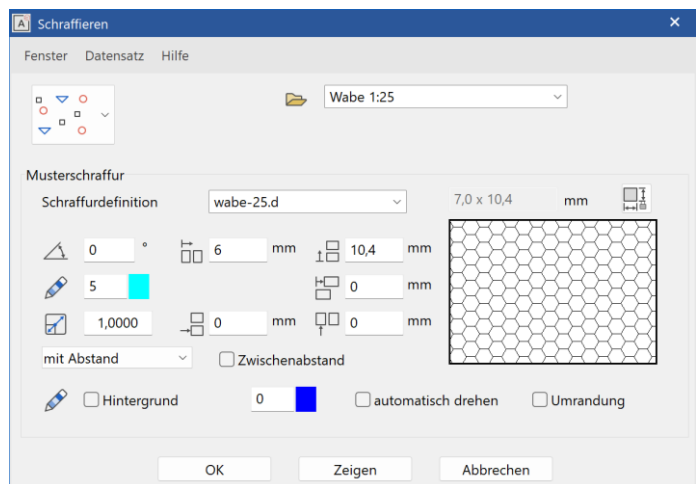


Hatches

Simplified offset detection for model hatches

The model hatching for the filling of polygons has a wide range of options. To make arranging the repeating elements easier, one needs to know the length and width of a single piece. The dimensions can now be determined with a single click and are used for the distance specification. One click that replaces many sub-steps.

In addition, you can now select whether the total distance or the intermediate distance is used for the distance specification. The most common case, namely seamless juxtaposition, even manages with an intermediate distance value of 0 without any knowledge of the length of the individual part. The necessary information is again reduced to a minimum.

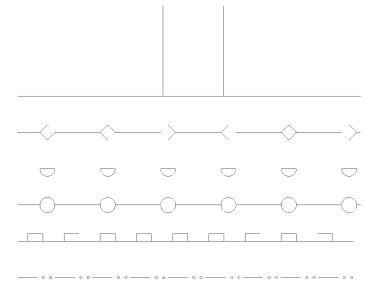


New hatches according to DIN standards

Our ambition is to provide a standard-compliant plan depiction according to country-specific standards. Changes and new regulations will be added as best as possible. In version 16, some hatching has been added, according to DIN, such as fire protection hatching, honeycomb hatching or tile patterns.

Line types

Standard-compliant plan execution is one of the top principles of ELITECAD. Six new line types for standard-compliant drawings are introduced in the DIN plan drawing ordinance. The line types are available for further use.



Texts

Five new predefined text parameters (e.g. text with frame) make handling labels easier.

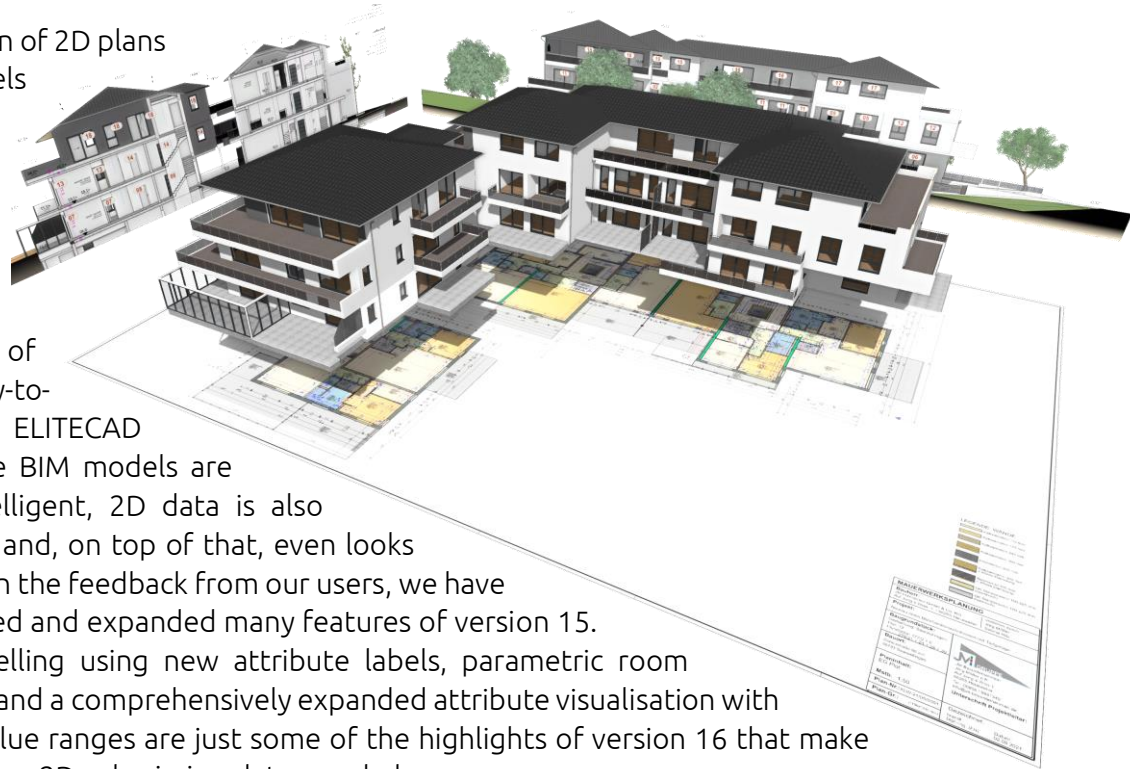
Arrows

Some predefined data sets have also been added to the arrows. For example, arrows with a circle can be selected in the new version.

Layout and documentation

Expect more – documentation aids

The simple derivation of 2D plans based on BIM models has been a great strength of ELITECAD for many years. Our users appreciate the plan-model link, which reduces a lot of manual work in day-to-day business. In ELITECAD Architecture 16, the BIM models are not only more intelligent, 2D data is also created even faster and, on top of that, even looks much nicer. Based on the feedback from our users, we have significantly improved and expanded many features of version 15. Intelligent plan labelling using new attribute labels, parametric room labelling in sections and a comprehensively expanded attribute visualisation with transparency and value ranges are just some of the highlights of version 16 that make creating and preparing 2D submission data a real pleasure.



Attributes and BIM

New predefined attributes

Attributes enrich the BIM model with information. In order to integrate even more information even more easily in the model, we have revised our predefined attributes. For example, the labelling of components such as doors and windows has been expanded to include "Free: Number". The compressive strength class for concrete is now also already predefined as an attribute.

New predefined attribute labels (e.g. numbering)

Many use the version 15 attribute labels to label objects parametrically. In version 16, the predefined labels have been extended with other new types - for example, door objects can be labelled parametrically with just one click using the new "Door number" object. Similarly, there are other labels for window labelling and the general numbering of objects. The great advantage of attribute labels - if the properties of the object change during the planning process, the labelling is updated automatically - this not only saves time, but also prevents errors. In addition, attribute labels can even be placed in sections in version 16, e.g. for room labels.



Rules and value ranges for attribute colours

The attribute colours are used to graphically visualise properties. For attributes whose values are only specific numbers or texts, it is easy to specify each colour individually. However, it becomes more difficult if the values are completely random and can occur in large numbers. There is now a simple solution to this challenge: rules and ranges.

In concrete terms, this means that a colour does not have to be specified for every attribute value. For example, a colour can be specified for values that are larger or smaller than a freely selectable limit. Any interval for values

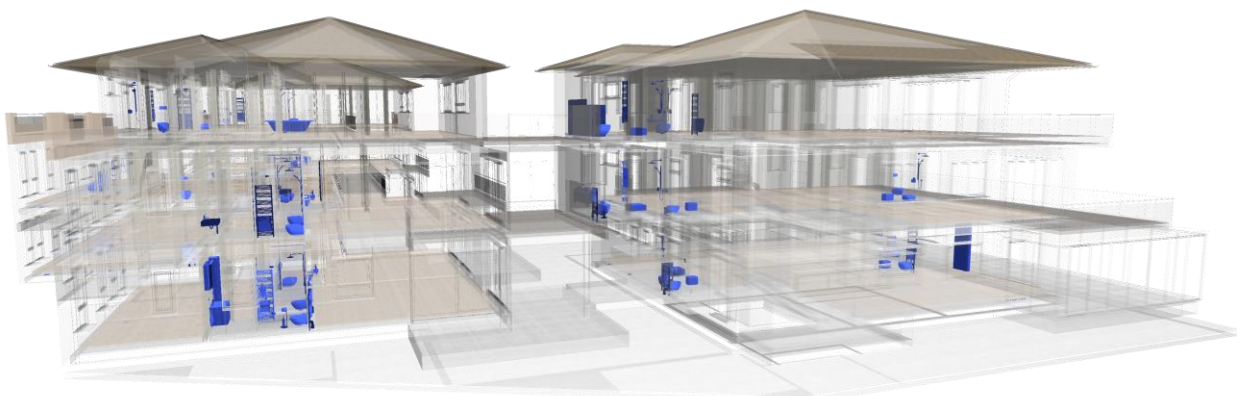
zwischen 1,0 und 2,0	↔	96
beginnt mit 1	↔	127
enthält nicht EG	↔	135
kleiner gleich 1,5	↔	3

is also possible. Texts can also be used for rules. In this way, colours can be defined for texts that begin or end with certain characters or contain certain character sequences.

Rules are created quickly and offer numerous options for reducing the colours to be defined to a small number. This increases the clarity and complex facts are presented graphically in an understandable way.

Attribute colours – transparency configurable

With this functionality, our primary goal is to highlight the essentials. Attribute colours make properties clearly visible, but if walls or ceilings obscure the view of the interior, then the colours are of no use either. The 3D transparency options for views were therefore created for an even better overview. Better visibility of the objects provides a better overview and you can capture the crucial information at a glance.



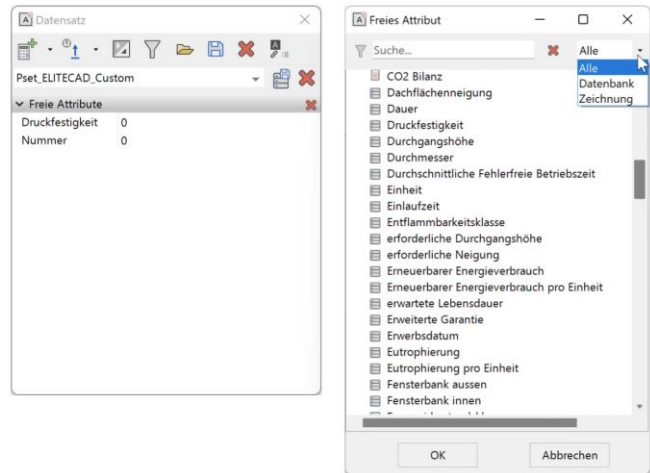
With the separately configurable 3D transparency for objects coloured according to attribute colours or for the remaining objects, there are numerous possible applications, e.g. the colouring of objects of a certain type in a transparent building. Control views are also of practical use, where objects whose attribute values are shown in colour according to certain rules and those objects that contradict these rules are shown in red, for example. This way you can see all the errors in the attributes at a glance. These are just a few examples, the possible applications with the new transparency display are unlimited.

Colours for fire rating adapted to DIN standards

In order to enable standard-compliant planning in accordance with fire protection, we have updated the preset colours for fire protection according to DIN.

Save attributes from drawings into database

ELITECAD Architecture 16 enables attributes from drawings to be transferred directly to your own database via a selection. In version 16, attribute definitions have been given their own icon and can be filtered according to origin so that it can be seen at first glance which attributes come from your own database and which come from drawings. The existing database attributes can thus simply be hidden. The new version makes it easy to merge drawing attributes into data sets and save them in your own database with just a few clicks.



Edit or delete the definition of free attributes

Of course, mistakes sometimes happen when defining new free attributes. With the new version, it is now also possible to edit and delete user-defined free attributes.

Views

New depiction type 'Solid with Shader' for highest quality

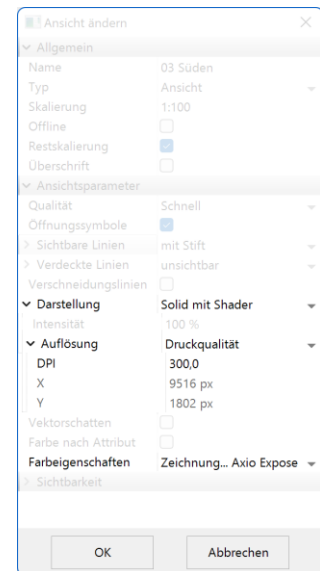
You can now achieve the highest graphic quality in the views while at the same time accelerating the image calculation with the new 'Solid with Shader' view option.



Shader effects such as grass, water, reflections and gloss effects have so far only been reserved for real-time visualisation in the model view. These cool effects are now also possible in calculated views. Unlike physical rendering, shaders work in real time. Image calculation takes a minimal fraction of standard rendering, and view depiction is faster than ever.

Resolution of solid views now individually configurable

The resolution of the calculated solid views is now freely configurable and can therefore also be set higher than the current screen resolution. Either via a scaling factor relative to the screen resolution or completely freely via the number of pixels, but in any case with the best possible quality.



Colour properties for each scene

ELITECAD has been supporting multiple colour settings for a long time, which can be configured individually and switched easily. Each setting contains the colour for the screen, the printer and the line widths. A single setting is usually sufficient, but it can happen that individual views contain so many lines that thinner line widths would be desirable. To avoid having to switch back and forth between the settings, colour properties can now be assigned to a view. Simply set them in the view options and configure the best display per view.

Room hatches separately configurable for each view

Room hatches can now also be switched on and off individually in the floor plans. Even more freedom for you in the individual design of views.



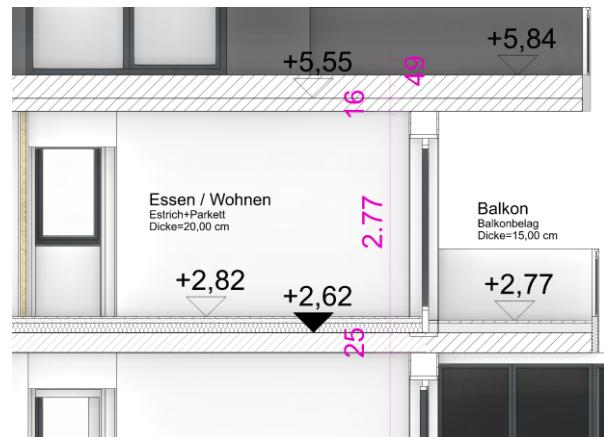
Draft view of multi-layered objects in floor plans and sections

Sometimes less is more, so you can now display multi-layered objects without a divider using the view option for a reduced depiction in frozen floor plans and sections. The only prerequisite for this is the use of the same materials or hatching.

Sections

Parametric labelling of rooms in sections

A long-cherished wish of our users - the parametric labelling of rooms in sections, analogous to the already known room labels in floor plans. In version 16 this is now possible via a new attribute label. Select the desired rooms with just one click in the section and place the label at the appropriate position. Displayed information such as floor layers, room name or room height can of course be freely configured and, as usual in ELITECAD, are automatically adjusted in the event of changes.



New section type 'restricted stepped section'

The new section type 'restricted stepped section' is not only the basis for the elevation views, but can also be used in many ways. For example, you can cut along buildings to separate outbuildings or objects such as a carport from the main object. With the new section type, covering hatches for delimitation become obsolete. The ideal combination of the popular section types stepped section and restricted section.

Automatic elevation views

Would you like to show all the walls of a room or facades next to each other in the views? The automatic elevation view is the perfect tool for this. What used to be possible with many manual intermediate steps is now possible with just a few clicks. And if something changes afterwards, all changes are automatically updated.

The elevation view of a room is by no means as clear as it appears at first glance. Does it have a niche or not? Should furniture be excluded or shown? Are all sides meant or not? We have designed the new feature so flexibly that every possibility is taken into account.



All you need is the new section group in the views. Each individual wall is cut using the restricted stepped section and is part of the section group. The section line determines whether or not library parts are displayed and which areas are displayed. The lettering is consecutive and thus defines the order of the individual sections. The section group can be placed in the plot like a single view at once, the arrangement of the sections in the plot is done automatically. Maximum degree of freedom with minimum effort.



But this new feature can do much more. When changes occur in the model, not only are the sections updated individually, the alignment to each other is also adjusted if necessary. Sections are easy to delete or add, of course this also works via drag and drop in the view manager, as well as changing the order in the section groups.

In the plot view, section groups are always considered as a unit. A common quick handling of the section group views on plots (insert, move) is easy and intuitive.

However, the restricted stepped section is not only restricted laterally, the height restriction can also be set in the view parameters or determined automatically via the room parameters. Only keep an eye on what is relevant - from floor to ceiling or only limited above or below.

If you change the settings of a section, the settings are automatically compared to all sections - parameters only have to be changed once, as easy as you are used to from ELITECAD.



Height markers

Depiction depending on representation level

The display of the height markers (incl. floor plan) is now dependent on the representation levels. This allows you to freely adjust the height markers for each scale.

In addition, 7 new height marker symbols have been predefined, so that ELITECAD offers an even larger selection of practical symbols.

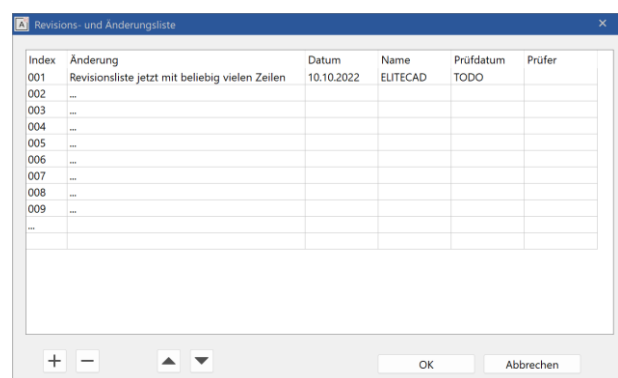
Height marker with parametric settings for parameter groups

In the settings for the representation levels, the groups for height markers (incl. floor plan) can now be freely configured.

Title blocks

Improved versioning with flexible number of revisions

If there should be more changes, we now have the solution for you! The improved versioning of plans: Manage many revisions quickly, easily and in just a few steps and document them on the plot. No more limitation of the number and flexible in use. The new dialog for the revision list has numerous input aids and allows changing the order, as well as adding and deleting the individual entries with a mouse click.



Quantities & Reports

Expect more – clarity

ELITECAD Architecture 16 is there for you when it comes to hard facts and figures. The new version saves you a lot of valuable time.

In addition to standard-dependent global master data, you can optionally also manage project- and region-specific master data and thus receive early information about compliance with or exceeding official limit values and specifications, such as the maximum area to be built on or the height of the construction project.

Do you need information for trades regarding reveal areas of windows and doors? No problem, these are now calculated and shown separately.

Management of project-related master data

You can now easily expand, override and manage global default values for master data with project or region-related master data, relevant for compliance with regional influencing factors such as official limit values or guideline values.

In the new project options, you can quickly and easily specify information, e.g. from a development plan, right at the start of the project. In addition to general data on the property, there are also characteristic values for the property size or the maximum permissible area for development.



Projektoptionen

Grundstück	
Gemarkung	Saarwellingen
Flur	12
Flurstück	177-2

Kennwerte

Grundstücksgröße	6070 m ²
Zulässige Grundflächenzahl (GRZ)	0,4
Zulässige Geschossflächenzahl (GFZ)	0,8

OK Abbrechen

Geschossoptionen

Kriterien für Vollgeschossigkeit

Grenzhöhe	2,3 m
<input type="checkbox"/> Mindestanteil der Fläche über Grenzhöhe	75 %
<input checked="" type="checkbox"/> bei geneigten Dachflächen	75 %
<input checked="" type="checkbox"/> Mindestgeschosshöhe	2,3 m
<input checked="" type="checkbox"/> Mittlere Höhe über Erdkante	1,6 m

Oberstes Geschoss

<input type="checkbox"/> Mindestanteil der Fläche über Grenzhöhe	75 %
<input type="checkbox"/> Min. Anteil an der Grundfläche des unteren Geschosses	66,6 %
<input checked="" type="checkbox"/> Staffelgeschosse	66,6 %
<input checked="" type="checkbox"/> Staffelgeschosse können Vollgeschosse sein	

Definition Staffelgeschoss

<input type="checkbox"/> Max. Anteil an der Grundfläche des unteren Geschosses	66,6 %
<input checked="" type="checkbox"/> Mindestrückprung von Staffelgeschossen	1 m
<input type="checkbox"/> % von Geschosshöhe	100 %
<input checked="" type="checkbox"/> muss das oberste Geschoss sein	

OK Abbrechen

ELITECAD Architecture 16 offers you the possibility to easily check compliance with these default values at any time, complex calculations for this are carried out fully automatically as usual.

The standard-dependent options of the quantity master data can now be set not only globally, but also project- and region-related. The options for storeys, especially those for determining the full storey, can also be entered easily using a new dialog. Here you can quickly and clearly define criteria such as limit height, minimum floor height, average height above ground level, criteria for staggered floors and much more.

Deviations from the global master data are highlighted in colour for a better overview and can be easily reset at any time. Tooltips show you the overridden global value for quick comparison.

Stammdaten

Synonyme Schichtarten Objektarten Wandbelagsdicke Texte Farben INI-Werte Optionen

für aktuelles Projekt gültig Saarland (29.09.2022) Verwalten Zurücksetzen

Id	Norm	Gewerk	Objektart	Wertart	Wert
169	DIN 277 (2016)			Ergebnis aus Formel	1
170	DIN 277 (2016)			Abzugsprüfungen (Offnungen)	1
171	DIN 277 (2016)			Winkelgenauigkeit	1
172	DIN 277 (2016)			Formelgenauigkeit	3
173	DIN 277 (2016)			Wertgenauigkeit	3
174	DIN 277 (2016)	Raum		Mindestraumgröße	1
175	DIN 277 (2016)	Raum		Faktor unter Grenzhöhe 1	0
176	DIN 277 (2016)	Raum		Faktor zwischen Grenzhöhen	0,5
177	DIN 277 (2016)	Raum		Faktor über Grenzhöhe 2	1
178	DIN 277 (2016)	Raum		Minimale Nischentiefe	0,13
179	DIN 277 (2016)	Raum		Fenstermaße zur NGF rechnen	0
180	DIN 277 (2016)	Raum		Berechnungsergebnis anzeigen	0
181	DIN 277 (2016)	Raum		Wohnflächen, Grenzhöhe 1	1
182	DIN 277 (2016)	Raum		Wohnflächen, Grenzhöhe 2	2
183	DIN 277 (2016)	Putze	Wandbelagschicht	Oberfläche m², übermessene Öffnungen bis inkl.	2,5
184	DIN 277 (2016)	Wände gemauert	Wand (-bekleidung)	Wände in m², übermessene Öffnungen bis inkl.	2,5
185	DIN 277 (2016)	Wände betoniert	Wand (-bekleidung)	Wände in m², übermessene Öffnungen bis inkl.	2,5
186	DIN 277 (2016)	Wände betoniert	Wand (-bekleidung)	Wände in m², übermessene Öffnungen bis inkl.	2,5
187	DIN 277 (2016)	Trockenwand	Wand (-bekleidung)	Wände in m², übermessene Öffnungen bis inkl.	0,5
188	DIN 277 (2016)	WDVS	Wand (-bekleidung)	Wände in m², übermessene Öffnungen bis inkl.	2,5
218	DIN 277 (2016)		Geschossdaten	Grenzhöhe für Vollgeschosse	2,3
228	DIN 277 (2016)		Geschossdaten	Mindestanteil der Fläche über Grenzhöhe für Vollgeschosse	66,6
238	DIN 277 (2016)		Geschossdaten	Staffelgeschosse: Mindestanteil der Fläche über Grenzhöhe für Vollgeschosse an der Grundfläche des unteren Geschosses	75
248	DIN 277 (2016)		Geschossdaten	Mit geneigten Dachflächen: Mindestanteil der Fläche über Grenzhöhe für Vollgeschosse	75
258	DIN 277 (2016)		Geschossdaten	Oberstes Geschoss: Mindestanteil der Fläche über Grenzhöhe für Vollgeschosse an der Grundfläche des unteren Geschosses	75
268	DIN 277 (2016)		Geschossdaten	Mindestgeschosshöhe von Vollgeschossen	2,3
278	DIN 277 (2016)		Geschossdaten	Mittlere Höhe über Erdlinie	1,4
288	DIN 277 (2016)		Geschossdaten	Mindestsprung von Staffelgeschossen	2,5
298	DIN 277 (2016)		Geschossdaten	Oberstes Geschoss: Mindestanteil der Fläche über Grenzhöhe für Vollgeschosse	75
308	DIN 277 (2016)		Geschossdaten	Staffelgeschosse können Vollgeschosse sein	0
318	DIN 277 (2016)		Geschossdaten	Staffelgeschosse: Maximalanteil der Grundfläche an der Grundfläche des unteren Geschosses	66,6
328	DIN 277 (2016)		Geschossdaten	Minimale Kniestockhöhe	1,2
338	DIN 277 (2016)		Geschossdaten	Minimale Kniestockhöhe	1,2
348	DIN 277 (2016)		Geschossdaten	Geschosshöhe als Mindestsprung von Staffelgeschossen verwenden	0
358	DIN 277 (2016)		Geschossdaten	Staffelgeschosse sind unter einem Winkel am Schnittpunkt der Fassaden mit der Oberkante der Dachverkleidung eingerückt	45
368	DIN 277 (2016)		Geschossdaten	Anteil an Geschosshöhe als Mindestsprung für Staffelgeschosse	100
378	DIN 277 (2016)		Geschossdaten	Staffelgeschosse müssen oberste Geschosse sein	1

Importieren Exportieren Alle Stammdaten zurücksetzen Schließen

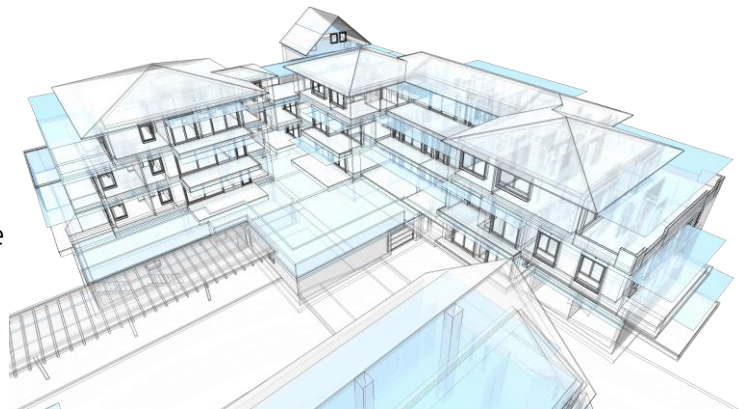
Aktueller Wert 66,6 (aktiviert)
Standard 75 (deaktiviert)

In order not to keep reinventing the wheel, you can export and import all master data, including project-related data, collectively or separately, which is practical for easy transfer to new projects.

Calculation of full storeys

You can now define limiting and characteristic values of full storeys, i.e. storeys that are mostly above ground and are fully developed to a certain extent in terms of area, in the new storey options of the master data. The complex calculations of the dependent areas are carried out fully automatically by ELITECAD as usual for you.

As usual, you can verify the calculated individual- and aggregated areas with just a few intuitive clicks. A separate report showing whether a storey is a full storey or not gives you final certainty as to whether the associated areas are used to calculate the floor area ratio (FAR).



Automatic calculation of FAR and BCR based on plans



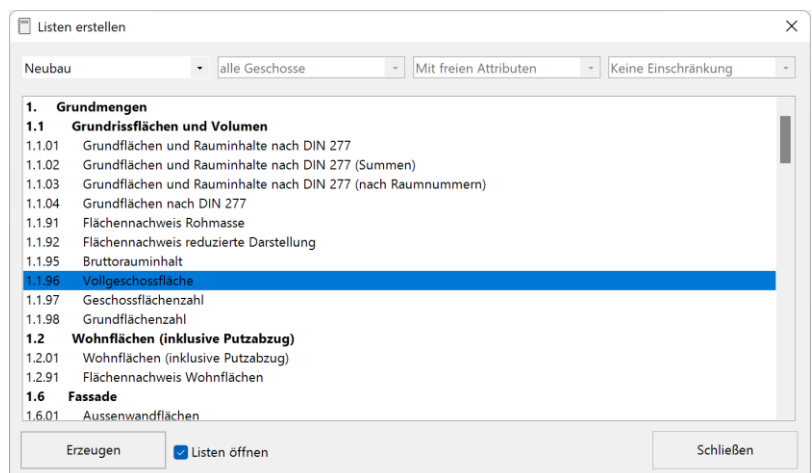
Depending on the project and storey options, ELITECAD Architecture 16 automatically calculates developed areas such as the building coverage ratio (BCR) and floor area ratio (FAR). You can easily select these in the quantity manager and check the associated total and individual areas and rules graphically.

Deviations from and exceedances of the project parameters - based e.g. on the development plan - are clearly displayed in new associated reports. All this guarantees you quick and easy planning security.

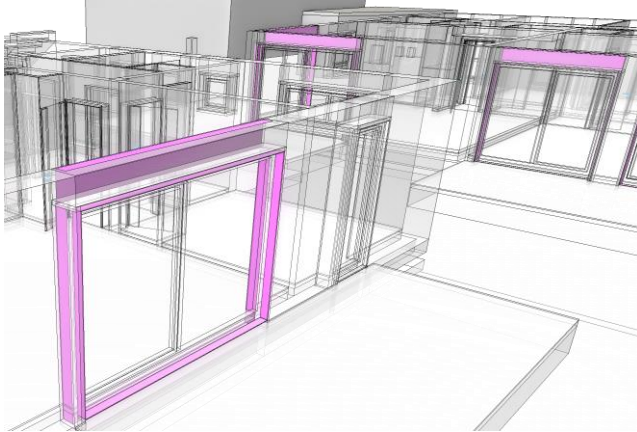
New filtering options for storeys and buildings

You can now create clear reports even more easily. For example, with the help of a new context-dependent filter option according to structures and storeys.

In addition to other usability adjustments when creating reports, you can now click on an entire group to select all the reports it contains at once, and add to or adjust a selection at any time. At the end you can easily generate all reports at once.



Report for reveal areas for doors and windows



A feature request we received several times is the separate calculation and identification of reveal areas for windows and doors. ELITECAD Architecture 16 now provides you with this information, as usual, including graphical representation and documentation in associated reports.

New materials for data exchange with tendering applications

With new predefined representation level materials, we support you in exchanging data with your preferred tendering systems (e.g. concrete classes).

Visualisation

Expect more – impressions and customer enthusiasm

Appealing graphic output in all phases of planning? Why not if it doesn't mean more effort. With the extensive, impressive new visualisation materials that are already preset in all objects, this becomes a reality. This makes planning even more fun. By the way - a nice 3D model fits perfectly with the new user interface. Many optimisations when dealing with visualisation materials give you a better overview and support you in everyday planning.



Shine in front of your customer with professional presentation documents. Who wouldn't like a high-quality video of their project? Preferably in 360°. Just select and save - it's that easy with ELITECAD 16. With the automatically cropped images from the model or plans, you can also create 2D graphics in record time.

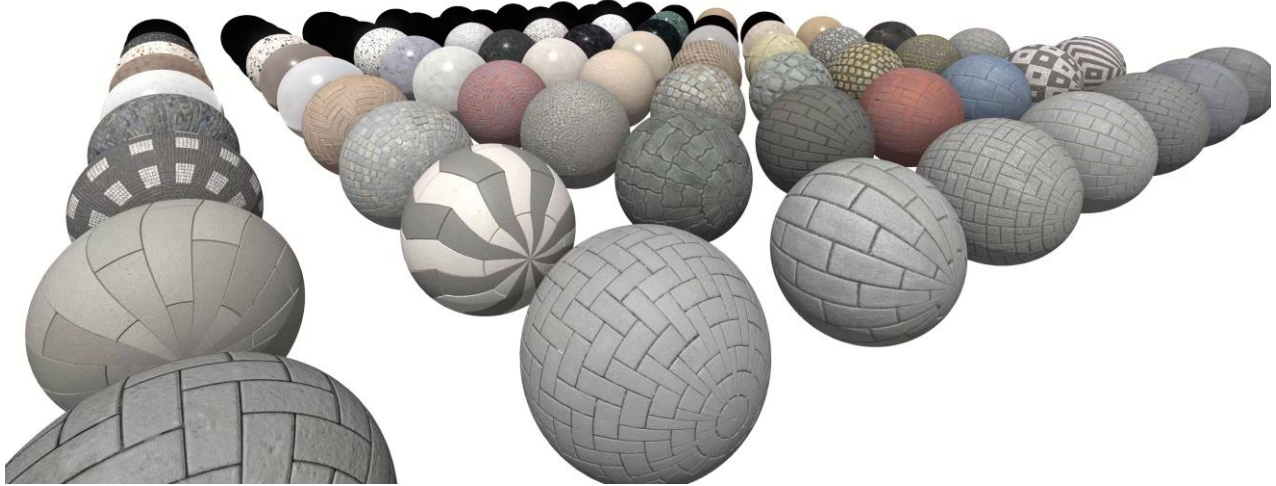
Visualisation materials

Completely redesigned library content

In ELITECAD 16 you will find the right visualisation material faster than ever before. This was made possible by reorganising the entire database of visualisation materials. Over 3900 visualisation materials were revised and re-categorised. The restructuring was carried out according to material type, use, quality and classification. The result is better category names, fewer levels of detail, and a more logical structure. The previous database remains in an archive, so older drawings are 100% compatible.

More than 700 new materials with high quality textures

Visualising with ELITECAD is fun and starts with the design. The already large selection has been expanded to include 700 high-quality, industry-relevant visualisation materials.



Take advantage of graphical quality from design to submission and enrich your model with high-resolution, fully preset materials, with effects such as shine, surface finish, reflection, depth information and much more.

Easy access to thousands of online materials

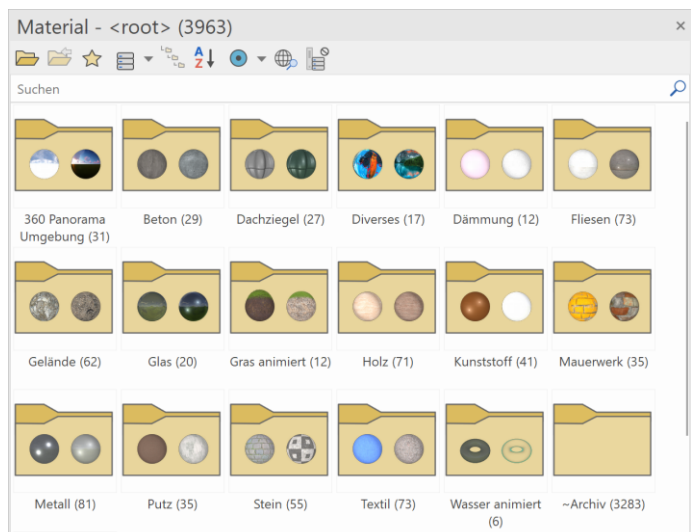
Want more? No problem - you can find quick access to thousands more high-quality materials in online libraries. Importing materials from the most popular platforms like Quixel Megascans, ambientCG, Polyhaven is no longer a big deal. Download materials, drag & drop them into ELITECAD and use them directly in your model.

New revised material management

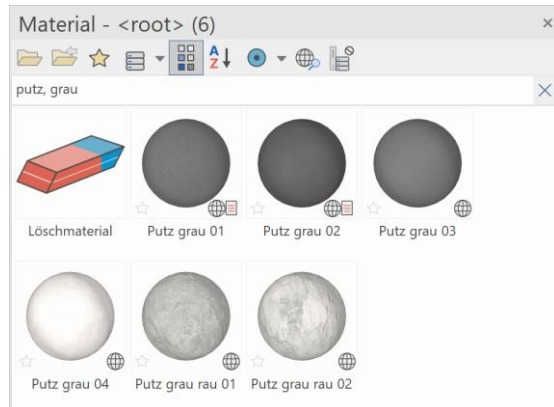
New visualisation materials are the basis for the presentation, but only half the battle. Only with simple usage does the work become fast and productive. You will quickly appreciate many improvements in handling the materials.

Globally unique material keys (GUIDs)

Each visualisation material in ELITECAD Architecture 16 now has a clearly recognisable material key - a so-called GUID (globally unique ID). This key is retained when models are copied, shared, or imported. It is even language-independent, i.e. a material is recognised when the language is changed, although the material name is language-dependent. No more merging or comparing unnecessary duplicates, just rely on the GUIDs in ELITECAD.



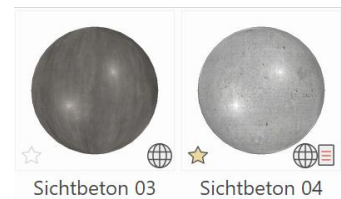
Intelligent search bar with multitext support



Never search for a material for a long time again! From now on it's "search and find". Simply enter the desired search term, the results are listed in real time. If the search is to be restricted even more precisely, several terms can simply be concatenated or terms can also be excluded.

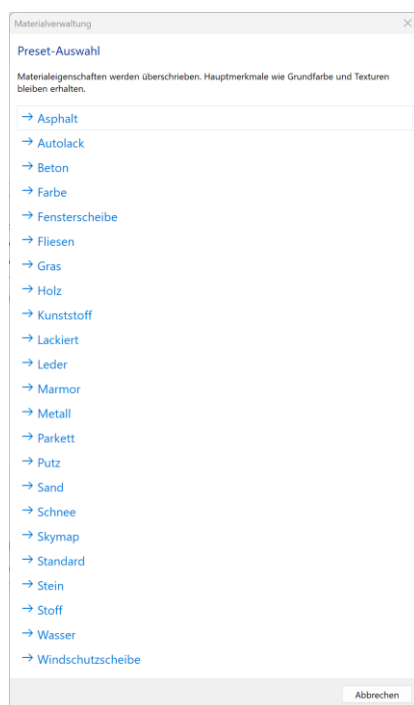
New favourites function including icons and filtering

You always want have your favourite materials



at hand? With the new, simple management of favourites for materials, this now works almost automatically. One click on the star and you've already created a favourite. The additional symbol next to the preview image tells you immediately what your favourites are and the filter on favourites immediately puts all your personal favourites in focus.

Predefined material presets for automatic configuration of reflections, shininess, etc.



More than twenty fully preconfigured presets and hundreds of multilingual synonyms for the automated parameterisation of materials enable the automatic adjustment of gloss or specular, for example. Therefore, materials and textures no longer have to be manually configured. All material properties can be preset with one click.

Batch import of materials and folders using drag & drop (incl. presets)

Step by step, importing material by material is too time-consuming for you? We think the same! That's why the fully automated batch import is now also available for complete directory hierarchies. Just drag and drop a folder, sit back and let the program do the work.

ELITECAD Architecture 16 includes automated detection and presetting of material properties using hundreds of synonyms and presets. You can either have the material properties determined fully automatically or simply select a material type

yourself. Materials are automatically recognised by their filename.

Display number of materials

It's not easy to keep track of thousands of materials. That's why we've optimised the user interface to give you an even better overview. Each folder or category shows the number of materials it contains. This way you always have an optimal overview.

Display material origin

The indication of origin of the material can also be displayed as an additional symbol. Does it come from the database, does the material only exist in the drawing? Is it predefined globally and created

by the user etc. All this is represented in version 16 by means of additional symbols in the material manager.

Improved preview

You find materials, but you don't recognise anything? No problem, the material management now allows seamless zooming of the preview images as well as a large material preview in tooltips. This allows you to set your preferred size individually, just as you are used to.

Highlight used materials with a click

Where is a specific material used? Viewing material usages is now even faster with just half a click, it couldn't be faster. Simply click and hold the mouse on the additional symbol for the drawing material and all surfaces with this material are highlighted in the model.

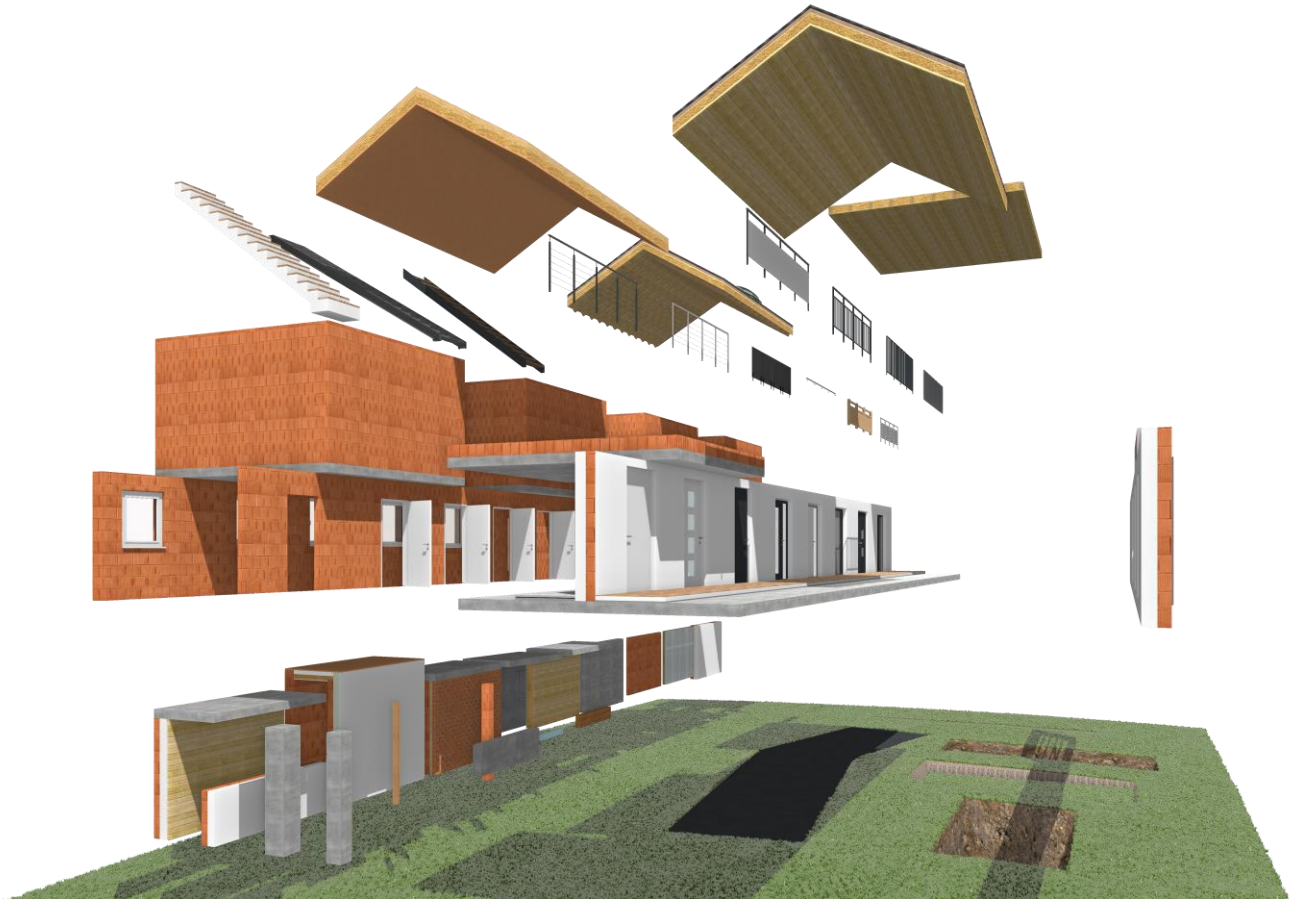
Performance of database access improved

Due to many database optimisations, you can reorganise, move, rename and now search for materials and entire folders much faster in the new version.



New materials for all standard parameters

As you know from your experience with ELITECAD, our aim is to relieve our users of manual work steps and repetitive processes. This also applies to the use of the many new materials.



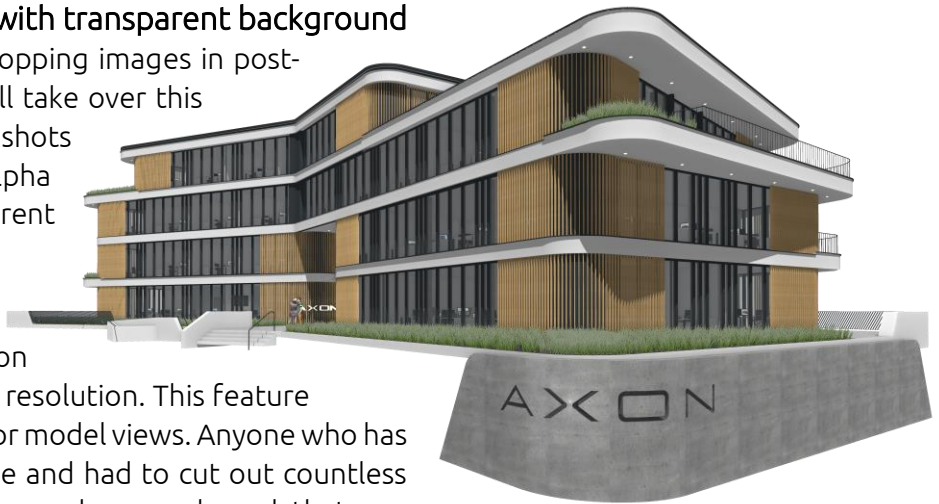
No configuration, no subsequent adding of materials, just plan and still shine, that was the requirement for ourselves! With the new version, fast and efficient draft planning at the visualisation level is easily and automatically implemented without any additional effort. ELITECAD Architecture 16 offers you hundreds of revised standard parameters of all objects with new visualisation materials.

Image export

Create and export snapshots with transparent background

Are you wasting a lot of time cropping images in post-processing? From now on we will take over this task! With the new version, snapshots can be exported with an alpha channel, i.e. with a transparent background, if desired.

With ELITECAD Architecture 16, razor-sharp presentation documents are generated in any resolution. This feature doesn't only work for snapshots or model views. Anyone who has ever saved a 2D plan as an image and had to cut out countless lines, dimensions, etc. probably knows how much work that can mean.



Exporting images with a transparent background makes this tedious process obsolete, everything happens automatically in the background. You just choose the option and you're done. Result: An image with e.g. 16K is completely automatically cut out in fractions of a second, without manual post-processing in external graphics programs.

Video export

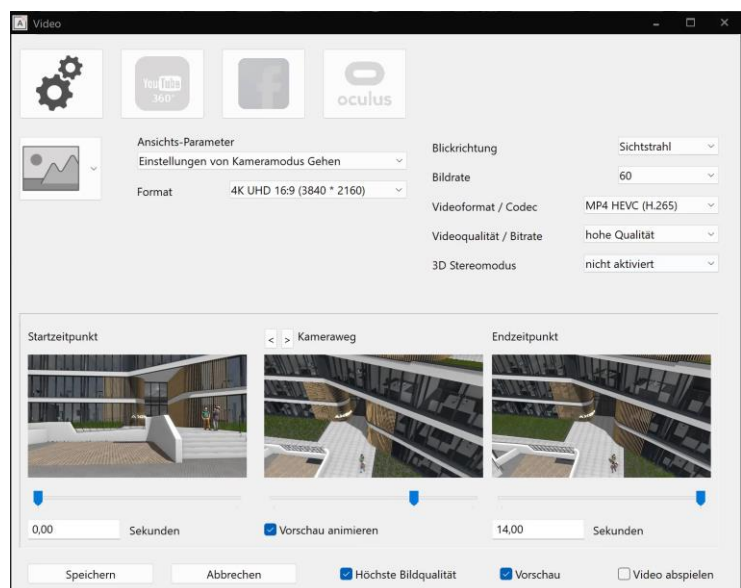
Optimisation and simplification of the video export dialog

You don't have to be a professional to export videos in ELITECAD. The revised video export dialog brings the setting options to the user interface in a simple and understandable way. Repeating elements and settings have been optimised, making it even easier to create attractive videos.

Easy native MP4 video export

Videos use codecs to compress the content. These are used during playback, but must also be considered when creating the video. Setting up these codecs is often complex and requires some expertise.

Admittedly, that was a bit complicated at times. In version 16 we have now taken over this task for you. With a pre-installed codec, you can export perfect videos in no time at all, even with standard settings. If you want to use special codecs, you still have the option to configure everything yourself.



Native generation of stereoscopic 3D videos

Your customer asks for 3D films? No problem - become a director yourself and stage what is important to you! Create stereoscopic 3D videos with just a few clicks! Simply select the 3D stereo option when exporting the video and you're done, no special knowledge or hardware required.

Connectivity & interfaces

Expect more – Collaboration, communication and teamwork

Our ambition for perfect quality does not end with ELITECAD itself. We also want to optimally pass on data to external partners and programs. The new PDF export impresses with its higher quality and smaller file sizes. Synchronise the model with external visualisation tools or export hundreds of DXF views including attribute colours with just one click thanks to the new DXF batch export.

From virtual model to reality with the new interface for 3D printing. Your customers will be amazed when they can disassemble a printed building storey by storey.

The connectivity to our cooperation partners is not neglected either. ELITECAD now transmits building data the BKI cost planner with just one click. With just a few clicks you already create an initial cost estimate based on the building model.



3D-PDF

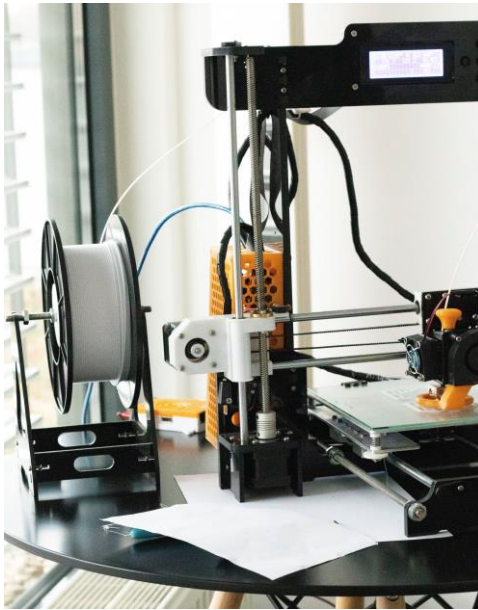
Export of views with attribute colours

Attribute colours are a visualisation aid and not the actual colour of an object. Not all viewer programs offer the possibility to display this practical representation. Therefore, when exporting views, we now created an option to use the configured attribute colour instead of the object colour. The plan or 3D model now looks exactly the same in the PDF viewer as it does in ELITECAD and you can also pass this useful representation on to your partners.

3D Printing

Virtual Reality is not enough for you? Would you also like to experience your buildings haptically? Models you can touch - this is now possible with the new 3D printing function in ELITECAD!





3D printing technology has experienced a real boom in recent years. Printers are becoming more and more accurate and faster, and above all cheaper to buy. ELITECAD Architecture 16 enables the printing of entire buildings, terrain models, library parts, free 3D bodies and much more using its own export interface. The only limit is your imagination! In ELITECAD, models are already scaled to the desired scale, divided into storeys and transparent areas optionally hidden. This allows you to hand over your building model to the 3D printer without any effort and in a short time you have a printed model available without manual work, which you can give your customer as a unique giveaway, for example.

STL export

The standard file format for 3D printing is STL (short for Stereolithography). There are two variants: ASCII or binary. An ASCII-STL file is a readable text file, but it needs a lot more storage space. Use the binary version if your printer supports it.

Size preview

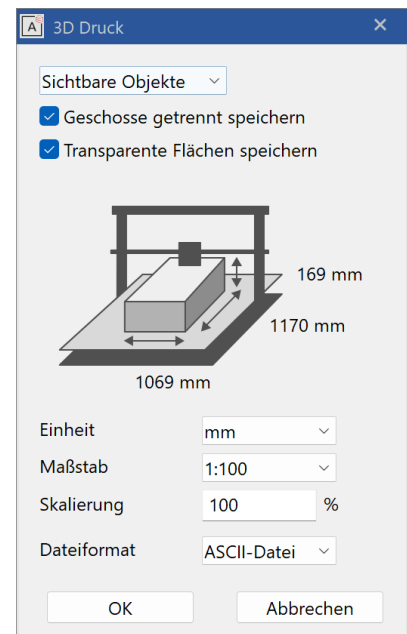
Every 3D printer has a maximum model size. With the adjustable scale and free scaling, the size of the printed model is displayed and you can check in advance whether there is enough space on your print bed.

Storeys or buildings

You want to print individual parts, the entire model or just the current storey. The STL export in ELITECAD gives you free choice. The optional automatic division into individual storey is particularly practical. This allows you to create a separate STL file for each individual storey in one step.

Transparency

Here, too, the freedom of choice is yours. Do you want to print transparent objects such as window panes and glass elements or do you want to see into the model? The choice is yours.



BKI Cost planner

Export of building data to BKI cost planner



The BKI cost planner calculates building costs based on statistical data. In coordination with our partner, the building cost information centre of the German Chamber of Architects, we have summarised the relevant information from the BIM model in a special report. This automated report is imported and processed by the BKI cost planner. This creates cost estimates at the push of a button without manually copying values.

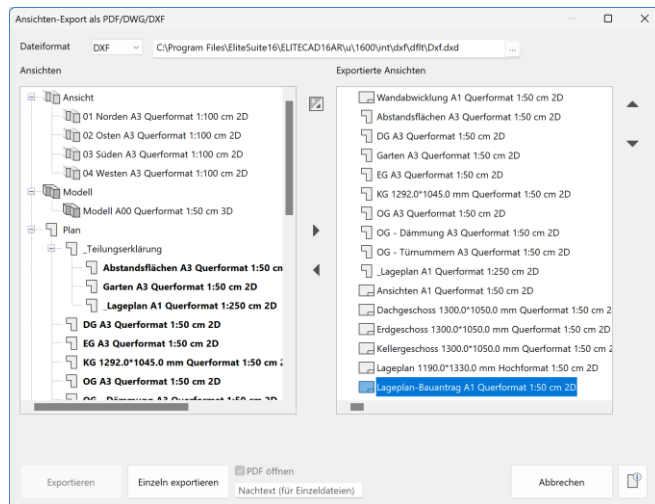
DXF/DWG

Import and export dialogs revised

DXF export and import were previously combined in a common dialog. As with the other interfaces, export and import can now be opened separately. This makes the application easier to understand and the separate dialogs clearer.

New batch export for DXF/DWG similar to PDF

Friday afternoon again? Now start your weekend sooner with the new batch export for DXF/DWG analogous to the PDF export!



With just one selection, you can create all (still) common delivery formats at once. No more waiting for individual exports. Faster, more efficient and fewer errors. One click, ELITECAD Architecture 16 does the rest!

A dialog with now three options. Select the views to be exported as known for PDF export and switch the file type to DXF or DWG. Everything works the same - only in the new format.

DXF Export of views with attribute colours

Similar to the PDF export described above, the DXF export now also offers the option of using the configured attribute colour instead of the object colour. The configured attribute colour of the view is used and the DXF plan looks like the view in ELITECAD.

Support of AutoCAD 2022 files

DXF-Export and import now also support AutoCAD 2022 files.

IFC

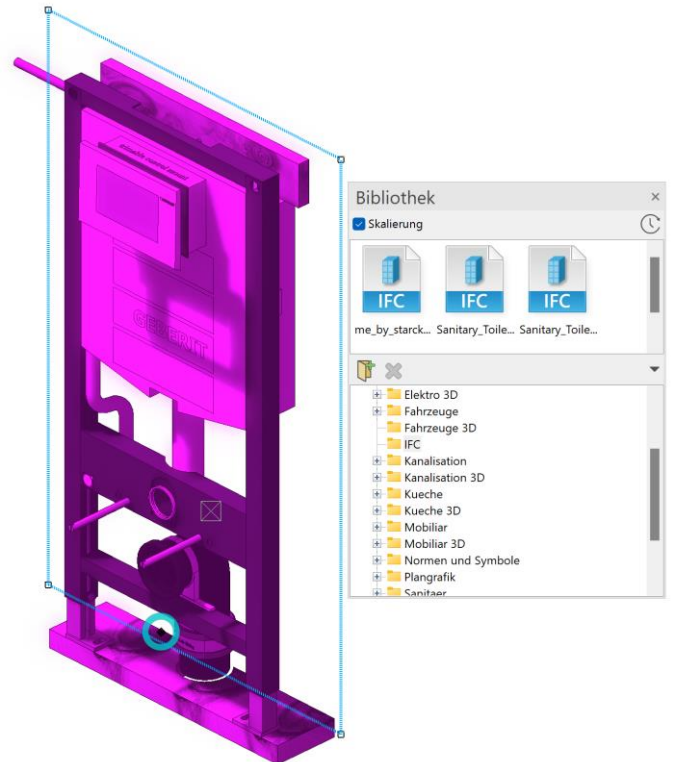
Improved exchange of IFC library parts

The pre-installed ELITECAD library contains hundreds of library parts with many advantages such as exchange points, layers, descriptions, etc. External formats such as SketchUp can also be included in the library without conversion. As more and more library parts become available in IFC format, we now also support native management of files in IFC format in the library manager.

As a practical additional benefit, the exchange of IFC library parts via placement and exchange points can now also be used in the same way as ELITECAD library parts.

Improved positioning / load into functions

Files in IFC format can now also be loaded with the positioning and load into functions. Placing the cursor over free positioning points makes it easier to take over individual parts or entire models.



PDF

New native PDF export

The PDF export has been completely redeveloped in ELITECAD Version 16. This means that an external printer driver is no longer necessary. The PDF interface is fully integrated in ELITECAD, you don't have to worry about anything. This allows you to export PDFs faster than ever.

Crisp high-quality plans in every zoom level due to export as vector data

Faster, smaller and more beautiful - vector information can now be stored natively as vector data. Razor-sharp plans can be displayed with ELITECAD Architecture 16 at any zoom level, regardless of the size of the plan. Texts are always displayed as native text in the PDF document and can be selected and copied.

Drastically reduced file size and faster export and management

PDFs can be exported with the new version in a smaller data size. This results in a large saving in storage space. Due to the smaller file size, exported PDF files are now also displayed faster.

Transparent vectorised colour gradients

Gradient hatching and transparent areas are an essential graphic tool in ELITECAD. The new PDF export now also supports these types as vector data, so plans can be transferred without loss of quality.



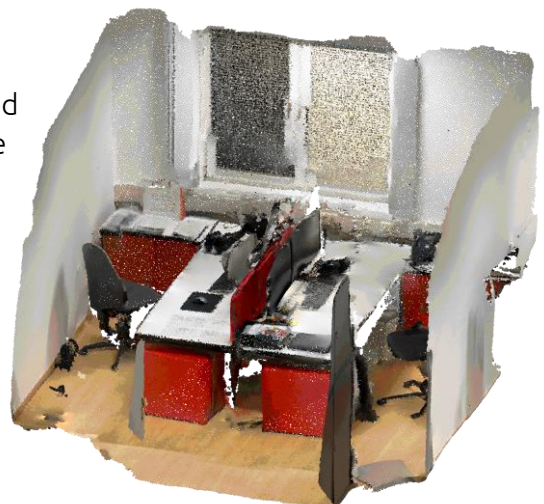
Export including layer structure

The visibility of the layer structures can be switched individually in common PDF viewers. The layer structure of ELITECAD is completely exported, so you can easily hide and show objects in the PDF afterwards.

Point clouds

Simplified splitting and cleaning of point clouds

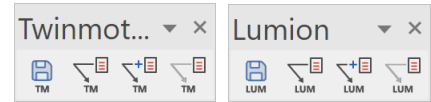
Overshot the target again? Millions of points were recorded with the laser scanner, but only a fraction of them are relevant? No problem, now with the advanced and fast selection and cleanup functionality. Splitting point clouds can now be controlled by selecting the desired area. Just select an area once and decide what stays selected – inside or outside. This allows the outside area to be selected and deleted quickly instead of selecting several times what actually needs to be eliminated.



Synchronisation with external rendering applications

Incremental model updates with a single click

Want to go one step further? You like to visualise with external software? Now create model updates quickly and easily with the new synchronisation functionality for rendering software such as Lumion or Twinmotion. Save once with a name and update with just one click in ELITECAD and the external visualisation software. In this way, changes to the model can be made effortlessly. Material assignments are always correctly retained thanks to the new GUIDs.



SketchUp 2022 support

Import and export of SketchUp files is now possible up to the current SketchUp version 2022.

Usability

Expect more – joy, simplicity and efficiency

Usability is one of the basic principles of ELITECAD. Maximum design freedom with minimum effort. We have followed this credo since the first version and it runs like a red thread through the entire program. Wherever we see a possibility, we pull the trigger. This allows you to use ELITECAD optimally and workflows are as easy as possible.

Drastically improved graphic output

Shader mode active by default

The improved graphics output offers the highest quality and performance in working mode. In addition, there is no CAD with nicer integrated graphics output directly in the design process. The improved graphics output and the new material library complement each other perfectly.

Optimised standard light settings

Without light no light effects. Therefore, in ELITECAD Architecture 16 we have optimised the standard light settings for the sun and ambient light for the new shader display with regard to efficient work and the presentation of your models.

Revised project templates

Quickly generate all necessary 2D data automatically using optimised project templates. With project templates for generating 2D CAD data, you save valuable time and costs when creating your designs. Using templates to set up a project significantly reduces the effort.

Revised sample projects

The current version of our pre-installed sample projects contains the new parameters, materials and light settings.

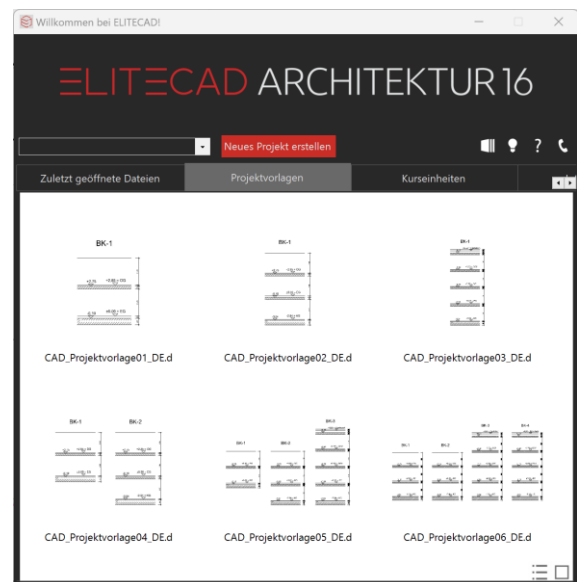
New additional layer definitions

With ELITECAD Architecture 16 we introduced a new predefined layer structure: "Extended Standard". This enables an even more detailed assignment of objects for users for whom the standard configuration is not sufficient.

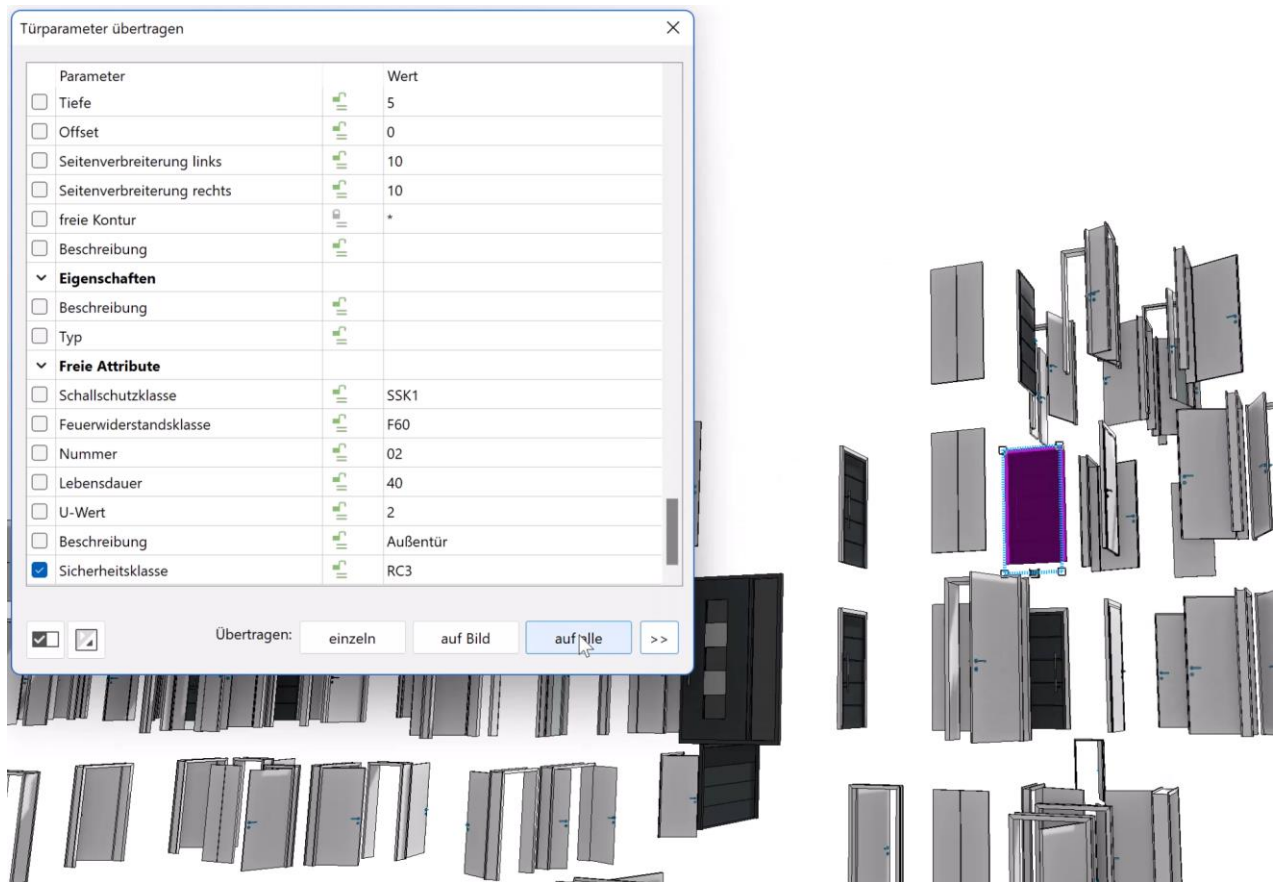
Copy parameters

Copy parameter function retains the previous selection per object

The copy parameters function now works even faster. True to the motto "Continue where you left off!" ELITECAD Architecture 16 remembers the last active selection or configuration of the copy



parameter function. The next time the function is used, the last configuration is preset again - all of this per object type, of course.



Walk mode now available as toggle switch in input bar

Walking mode is now even easier to activate. Instead of using the camera toolbar as before, you can now also activate the mode with just one click using a switch above the input line, quickly and clearly.



ELITECAD Help Centre

Expect more - insights



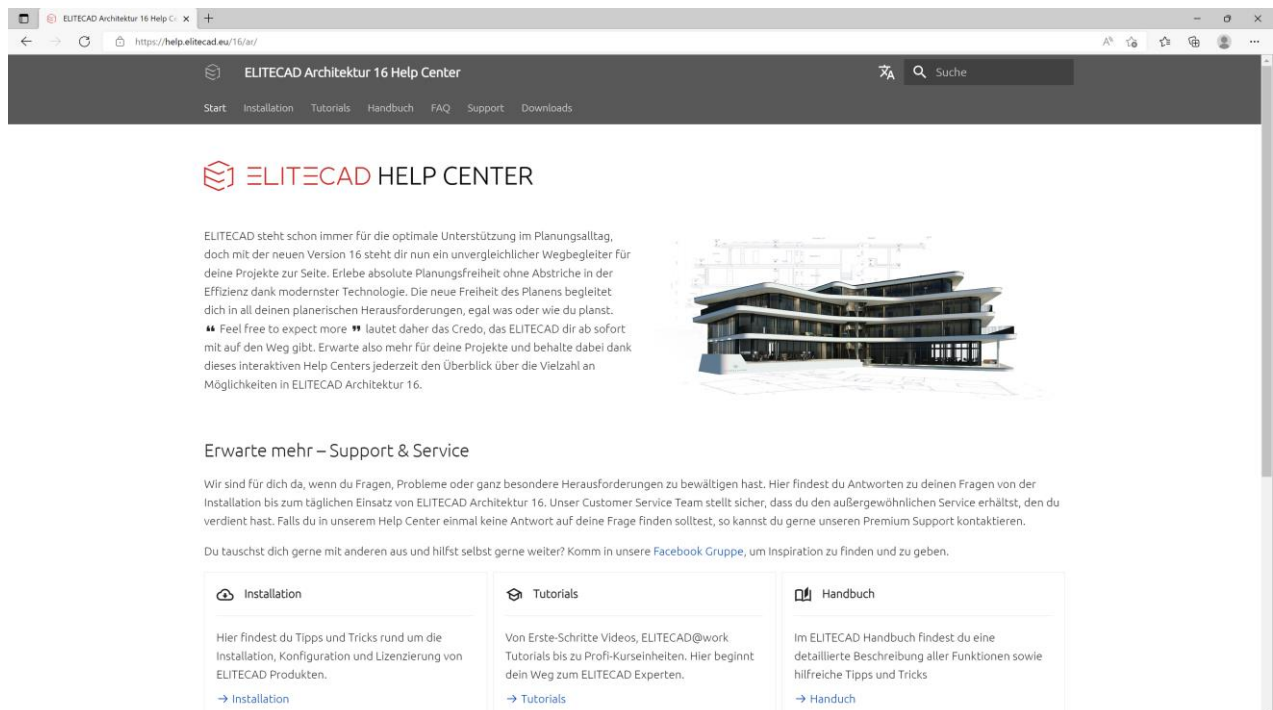
The project has to be finished and you can't find an important element anymore? No problem, the Help

Centre is your new interactive point of contact for all questions relating to ELITECAD Architecture 16. It can be easily accessed via the usual help function. Downloading documents is no longer required. Another highlight is the intelligent and fast search with a result preview, which immediately highlights the most important results.



New website for interactive help for ELITECAD products

In order to provide a central point of contact for all versions, we have created the ELITECAD Help Centre for all your questions. The range goes from useful documents such as manuals, FAQs, installation instructions to services such as courses, support, tutorials, videos and much more. Hundreds of new interactive pages, over 7000 updated screenshots in German and English will help you find exactly what you are looking for. In addition, thirteen course units are available in multiple languages. Everything centralised and at a glance in the new online platform!



The increased user-friendliness results in advantages such as a shorter training period for new employees. With the new interactive user interface of the ELITECAD Help Centre, long scrolling through PDFs is no longer necessary. In addition, the Help Centre can also be displayed in several languages.

Intelligent and fast search

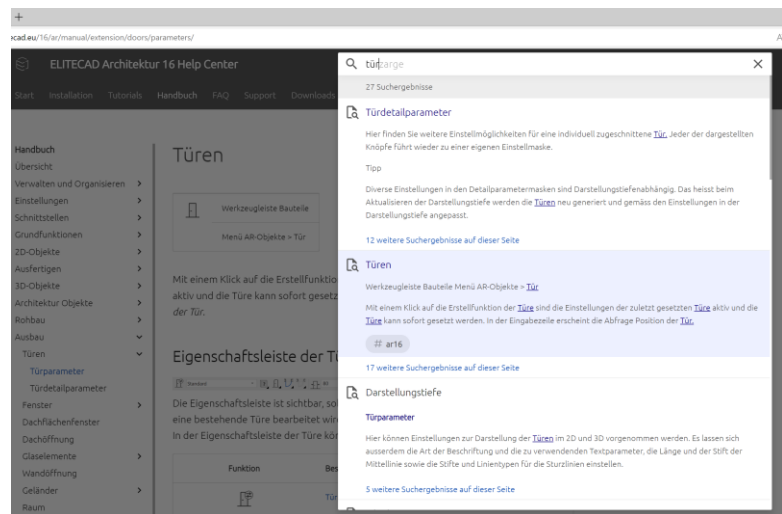
The new intelligent and fast search gives you a detailed preview of the results including highlighting. Enter a word in the search field and the matching results will be listed immediately. This is how you get to your destination quickly and intuitively.

Continuous expansion of content

With the new Help Centre we can react even faster to changes such as corrections or updates. The online content of our Help Centre is always up to date. But if you need an offline version, that's no problem either, you can optionally use the help content offline.

Native integration in ELITECAD

The native integration in ELITECAD enables direct, interactive access to the Help Centre. Long loading times for PDF files are no longer necessary. The help links in ELITECAD take you straight to the relevant parts of the manual. No more searching or scrolling necessary.



System and configuration

Expect more – Optimisation, support and internationalisation

Country-specific presets are an important part of ELITECAD. Not only for the users in the respective countries, but also for our customers who are planning for the respective regions.

Ongoing adjustments to new hardware and operating systems ensure future-oriented work. With ELITECAD you are always prepared for this.

Revised and optimised default settings

New extensions also require new settings. Some new setting options have been added to the options at various points. For example, tooltips have been removed from the interface settings as a separate point and extended by the display time for the input line.

"Save storeys to Files" is now called Team Mode, which better expresses its actual meaning.

Windows 11 Support



ELITECAD architecture 16 supports Windows operating systems from version Windows 10. Of course, ELITECAD also runs perfectly under the new version Windows 11 22H2.

Internationalisation and localisation

The expansion of the parameters is a continuous process. With each new version, new regions are added and existing regions are updated to the best of their ability.

Slovenian version

The Slovenian ELITECAD Architecture Version contains all parameters.

Greek version

The Greek version contains its own user interface and parameters.

Russian version

The Russian ELITECAD architecture version contains countless new parameters.